



Southgate Road, Potters Bar, Hertfordshire, EN6 5EX

# Senate House, Southgate Road

Located on the ground floor of this modern block with stunning communal entrance is a bright, modern, impeccably presented two bedroom apartment with fabulous high ceilings, video entry system, allocated parking space behind security gates as well as visitors parking and communal garden.

On entering the apartment there is a welcoming hallway, open plan lounge/kitchen with beautiful flooring and integrated appliances, two bedrooms and a family bathroom.

Located in the heart of Potters Bar within close proximity to many shops, restaurants, leisure facilities including Revive fitness and Furzefield sports centre. Potters Bar mainline station that provides a fast train service into Kings Cross (approx. 20 minutes). Access to junction 23 and 24 of the M25 and the A1(M) There are also several highly regarded schools within the area including Cranborne Primary School, Lochinver House School for Boys, Stormont School for Girls, Little Heath Primary School, Pope Paul Catholic Primary School and Dame Alice Owen and Mount Grace Secondary Schools.





NORF  
SARP





NORF  
SARF









CIAO  
BELLA

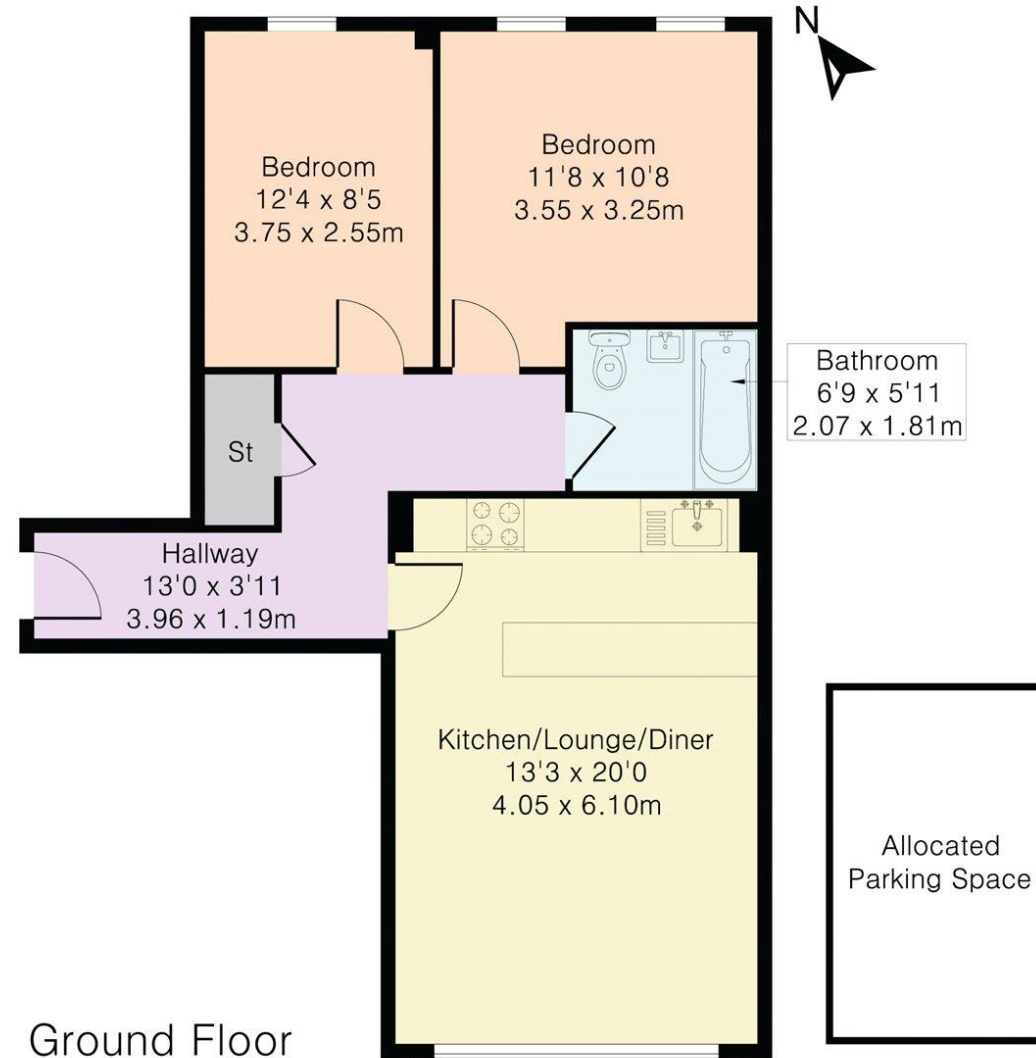








Approximate Gross Internal Area 679 sq ft - 63 sq m



Ground Floor



Although Pink Plan Ltd ensures the highest level of accuracy, measurements of doors, windows and rooms are approximate and no responsibility is taken for error, omission or misstatement. These plans are for representation purposes only as defined by RICS code of measuring practise. No guarantee is given on total square footage of the property within this plan. The figure icon is for initial guidance only and should not be relied on as a basis of valuation.



# STATONS

www.statons.com



The Property  
Ombudsman

Council Tax - D  
Local Authority - Hertsmere

## STATONS BROOKMANS PARK

53 Bradmore Green,  
Brookmans Park, Hatfield AL9  
7QS  
01707 611 144  
brookmans@statons.com

