



The Coach House

Firs Wood Close, Potters Bar EN6 4BY

The Coach House, 36 Firs Wood Close, Potters Bar EN6 4BY

❖ This wonderful four bedroom home offers circa 2726 sq ft of versatile accommodation arranged over two floors, set in a truly stunning setting.

❖ The accommodation comprises of welcoming reception hallway, four well proportioned reception rooms, kitchen with lovely aga, utility room and guest cloakroom. The first floor has four double bedrooms with en-suite facilities to two of them and a family bathroom. The idyllic wrap around rear garden has paved and decked seating areas ideal for outdoor entertaining and al fresco dining, with wonderful landscaping, manicured lawn and feature pond. The frontage provides off street parking for several cars.

❖ Located in an exclusive private turning within Northaw Park Estate, Firs Wood Close is a wonderfully peaceful development in the heart of the Northaw Greenbelt benefiting from 7 acres of communal open countryside & woodland as well as a communal tennis court.







































Approximate Gross Internal Area 2726 sq ft - 253 sq m

Ground Floor Area 1451 sq ft – 135 sq m

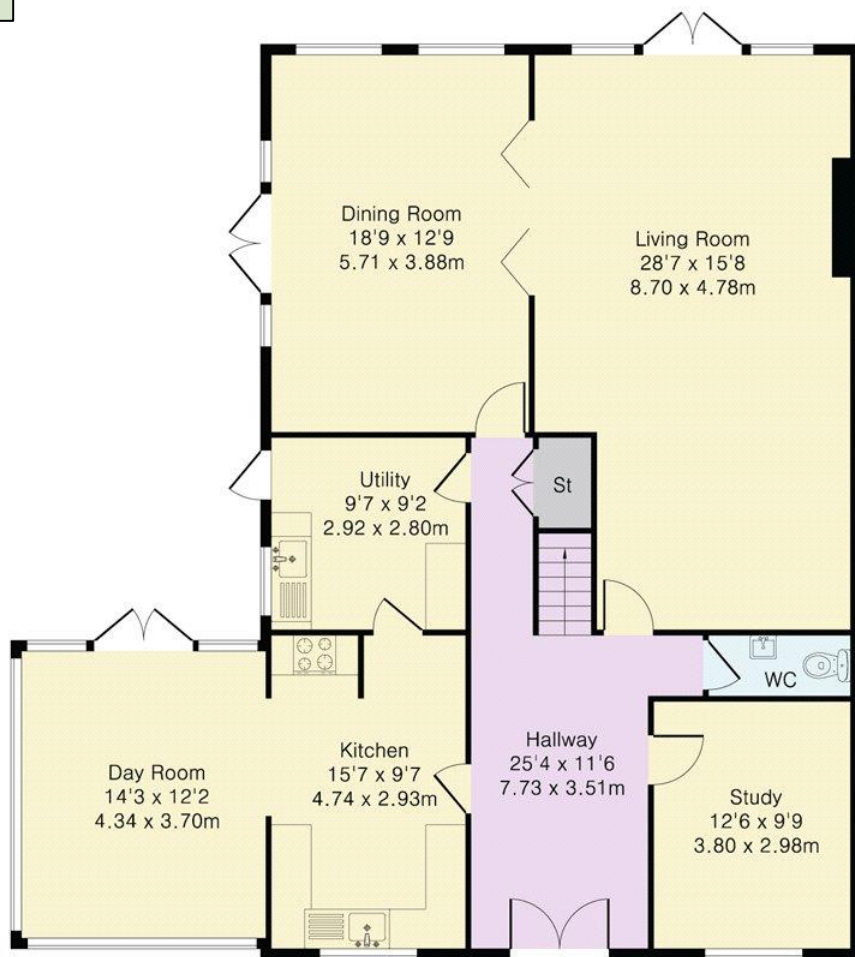
First Floor Area 1275 sq ft – 118 sq m

Local Authority:
Welwyn & Hatfield Borough Council
Council Tax Band: G
FREEHOLD

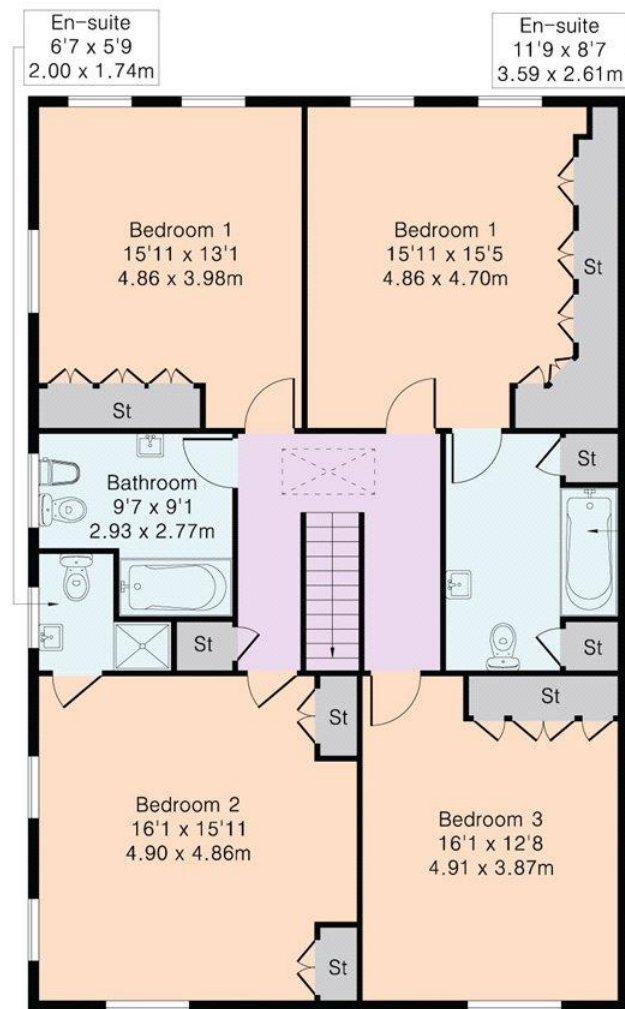
EPC to Follow



DISCLAIMER: In accordance with the 1993 Misrepresentation Act the agent had not tested any apparatus, equipment, fixtures, fittings or services and so, cannot verify they are in working order, or fit for their purpose. Neither has the agent checked the legal documentation to verify the leasehold/freehold status of the property. The buyer is advised to obtain verification from their solicitor or surveyor. Also, photographs are for illustration only and may depict items which are not for sale or included in the sale of the property. All sizes are approximate. All dimensions include wardrobe spaces where applicable.



Ground Floor



First Floor



**Brookmans
Park Office**

53 Bradmore Green, Brookmans Park, Herts, AL9 7QS

T: 01707 661144

E: brookmans@statons.com

STATONS
www.statons.com