

STATONS

www.statons.com

Wickcliffe Avenue

London, N3

Wickcliffe Avenue

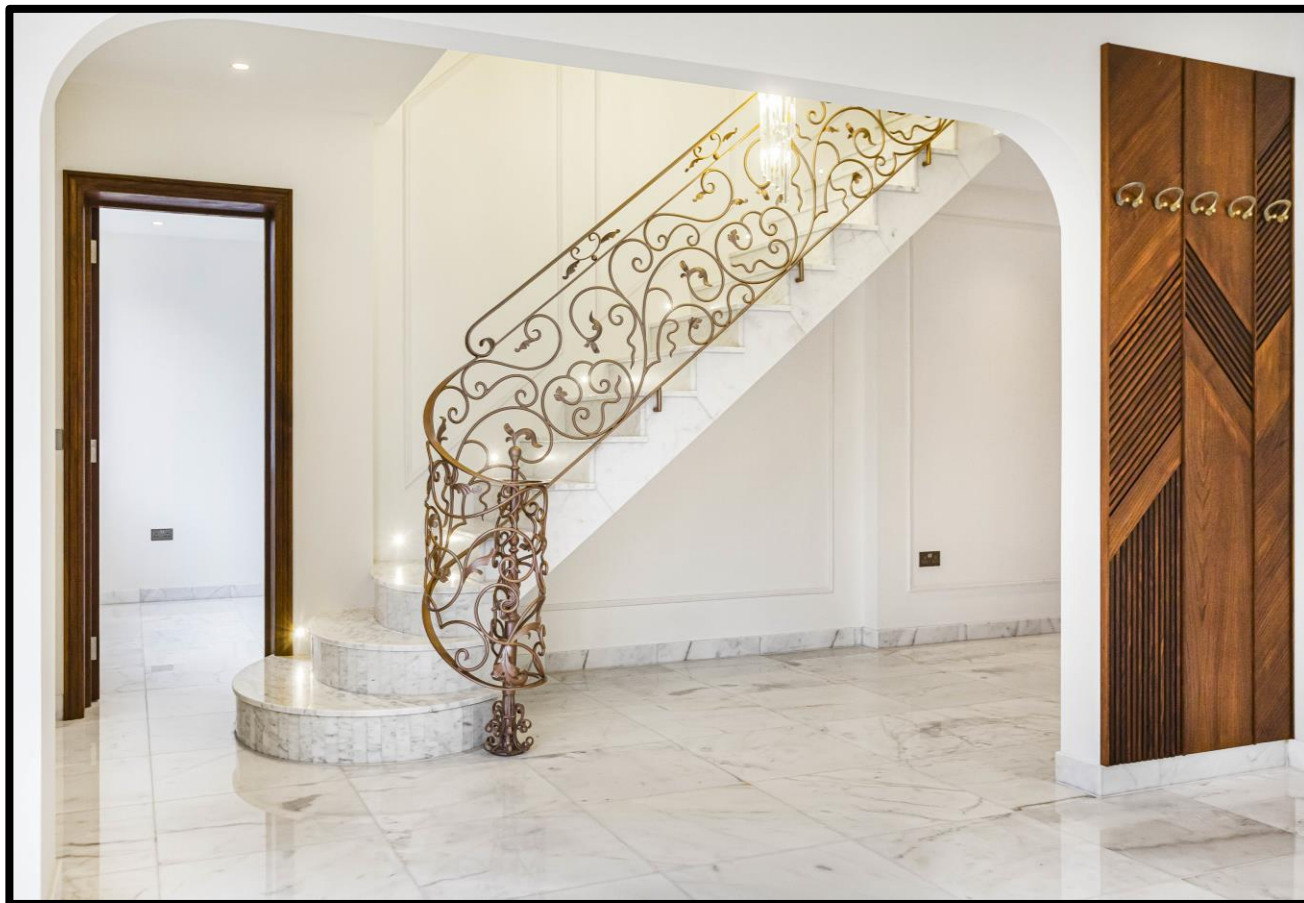
London, N3 3EL

Introducing this stunning **newly built** detached house, offering a perfect blend of modern luxury and traditional charm.

Boasting six spacious bedrooms, this unfurnished property provides ample space for a growing family or those who love to entertain guests. The interior features high-quality finishes, including sleek hardwood flooring and contemporary fixtures throughout. The open-plan kitchen is a chef's dream, complete with state-of-the-art appliances and a large island for casual dining.

The property also benefits from multiple reception rooms, ideal for relaxing or hosting gatherings. Outside, the landscaped garden provides a tranquil retreat, perfect for enjoying al fresco dining or simply unwinding after a long day.

Located in a sought-after area, this property offers easy access to local amenities, schools, and transport links. Don't miss out on the opportunity to make this exquisite house your new home. Contact us today to arrange a viewing.

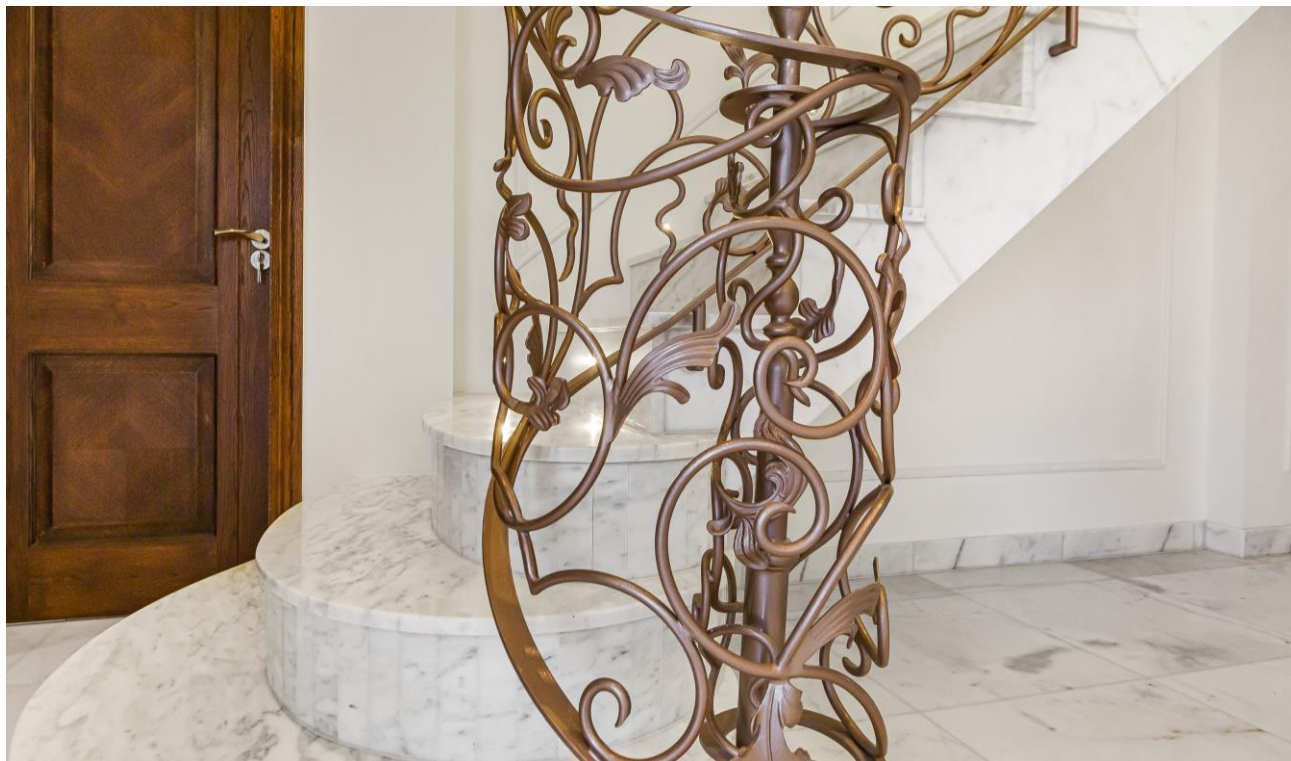






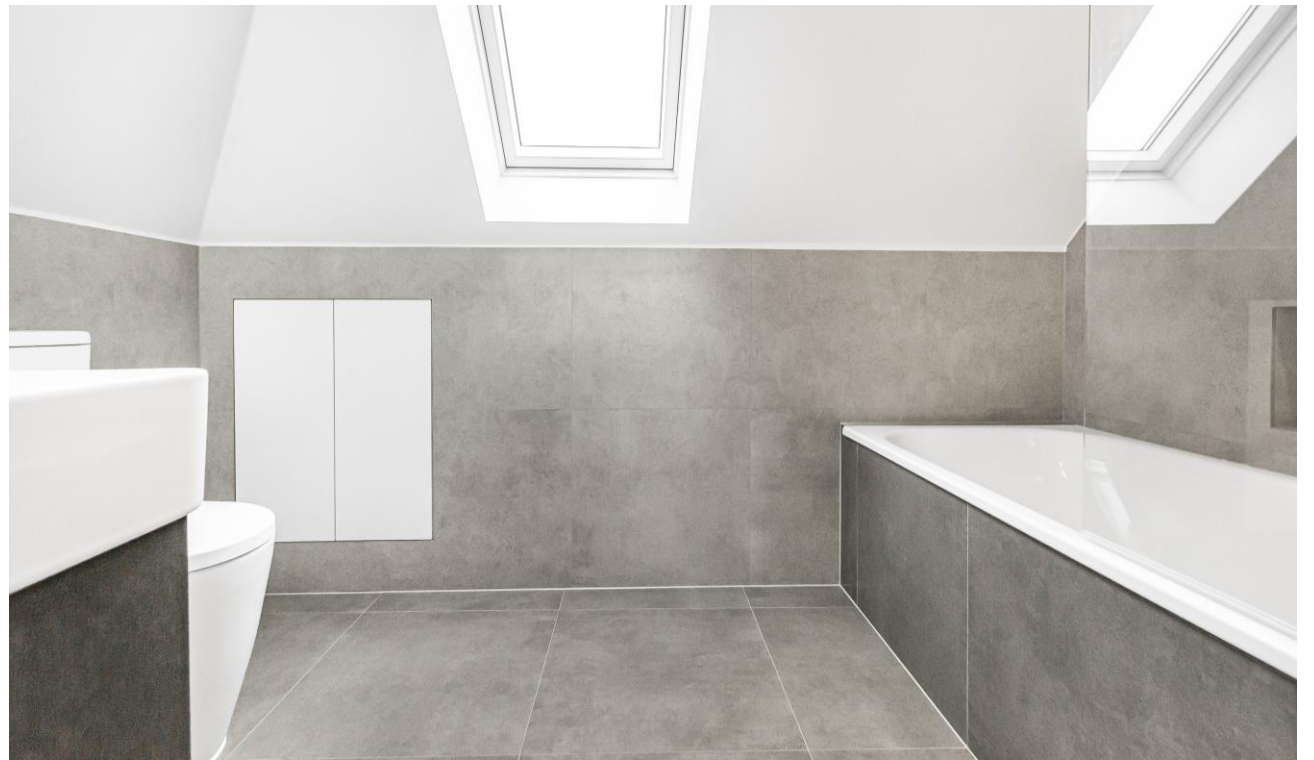







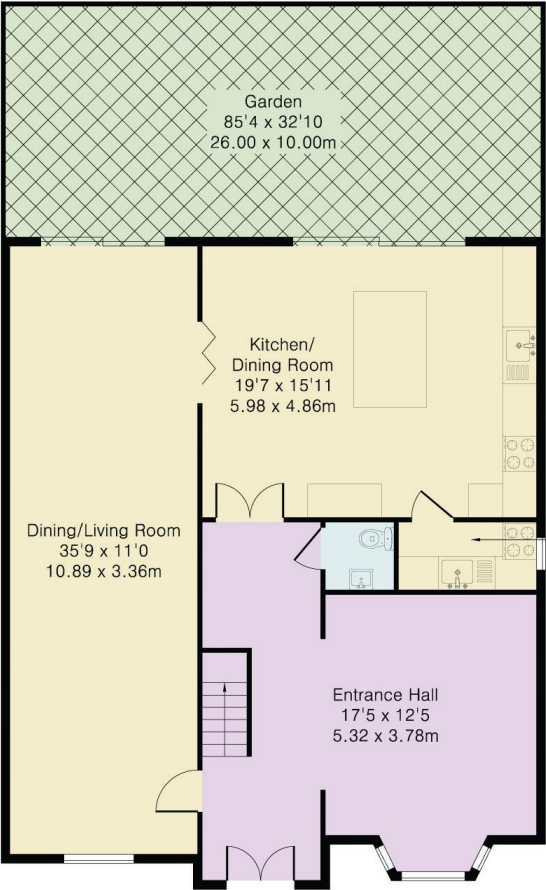








Energy Efficiency Rating		
	Current	Potential
Very energy efficient - lower running costs		
(92+) A	77	83
(81-91) B		
(69-80) C		
(55-68) D		
(39-54) E		
(21-38) F		
(1-20) G		
Not energy efficient - higher running costs		
England, Scotland & Wales		EU Directive 2002/91/EC 



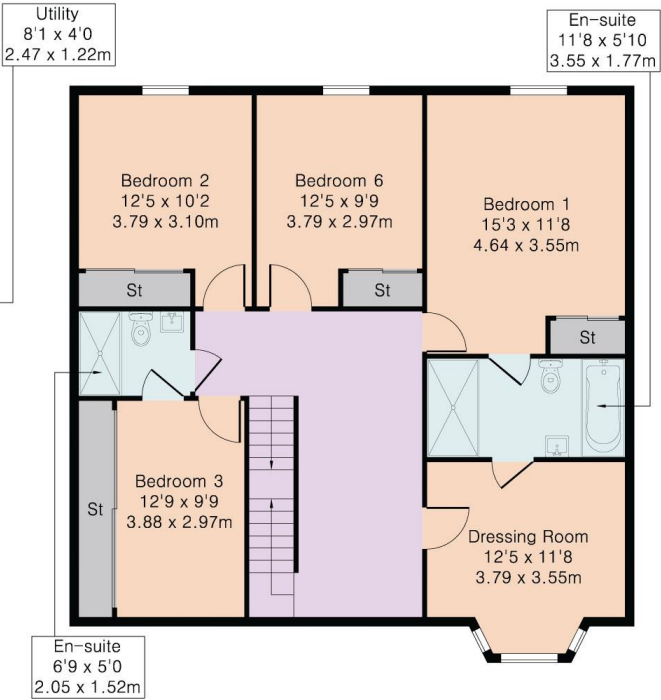
Ground Floor

Approximate Gross Internal Area 2586 sq ft - 240 sq m

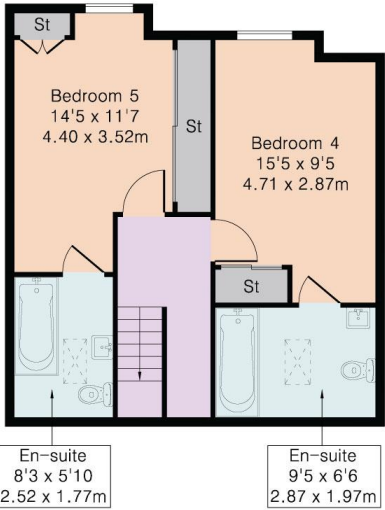
Ground Floor Area 1112 sq ft – 103 sq m

First Floor Area 996 sq ft – 93 sq m

Second Floor Area 478 sq ft – 44 sq m



First Floor



Second Floor

STATONS

www.statons.com

STATONS PREMIER LETTINGS

1/2 Hadley Parade
Barnet
HERTS
EN5 5SX
020 8441 9796
lettings.office@statons.com

