



143 Dugdale Hill Lane, Potters Bar, EN6 2DF



Dugdale Hill Lane

DAME ALICE OWENS CATCHMENT. This fabulous semi detached home has been extended to offer circa 1380 sq ft of bright, modern and versatile living accommodation arranged over two floors.

The ground floor comprises welcoming reception hallway, lounge, dining room, study, wonderful kitchen/breakfast room, utility room, large playroom/bedroom four and a bathroom. On the first floor there are three bedrooms with en-suite facilities to the principal bedroom. The rear garden has a paved seating area to the immediate rear ideal for al fresco dining and entertaining, artificial lawn and covered BBQ area. The frontage provides off street parking for several cars.























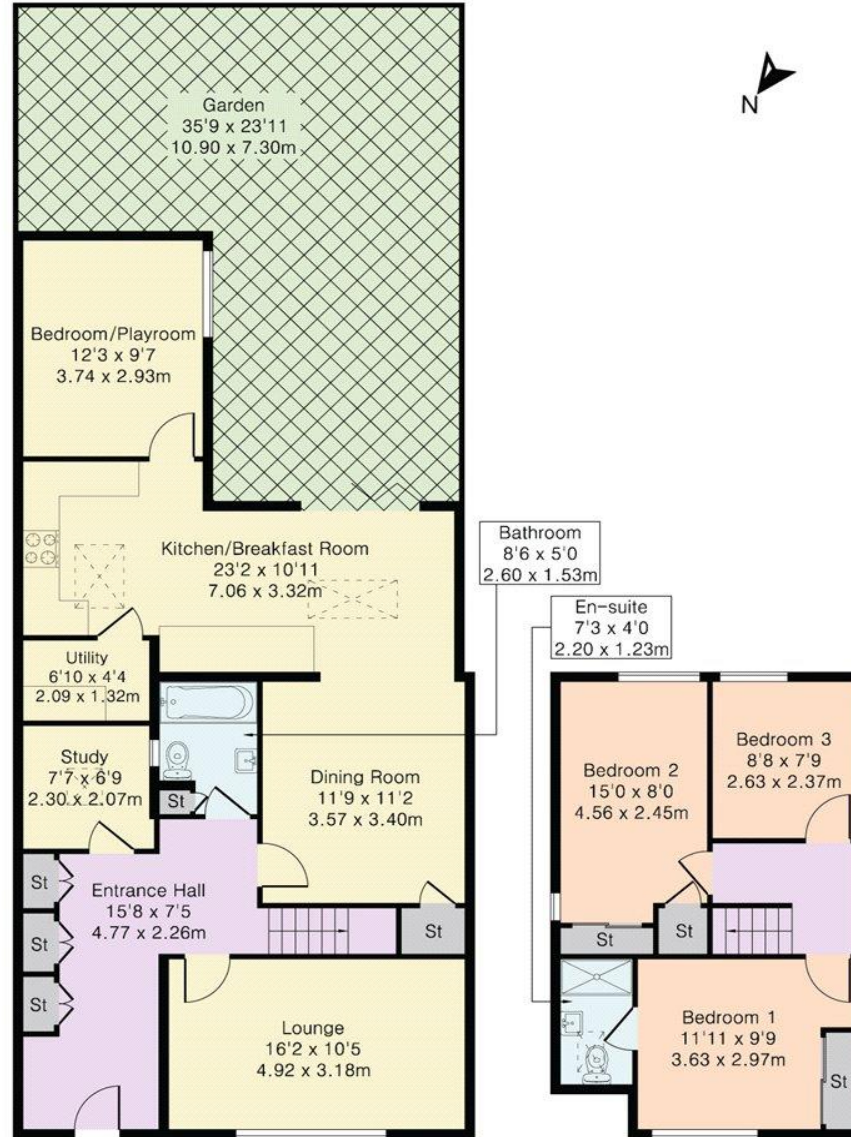




Approximate Gross Internal Area 1380 sq ft - 128 sq m

Ground Floor Area 992 sq ft – 92 sq m

First Floor Area 388 sq ft – 36 sq m

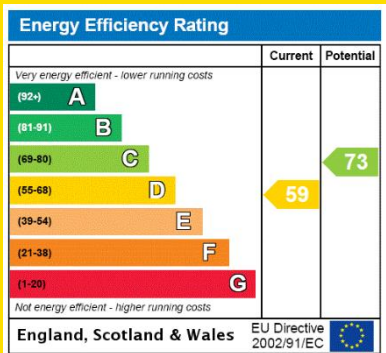


Ground Floor

First Floor

STATONS

www.statons.com



STATONS BROOKMANS PARK

53 Bradmore Green
Brookmans Park
AL9 7QS
01707 661 144
brookmanspark@statons.com

