

# Grovebury Court, Chase Road, London, N14 4JR

—  
An Exclusive Development of Just Four  
Stunning Townhouses



CONTACT US



PHONE:

020 8441 9555

EMAIL:

[newhomes@statons.com](mailto:newhomes@statons.com)

Grovebury Court, an exclusive development of just four stunning townhouses, nestled in a quiet cul-de-sac and completed to an exceptional standard.

Each spacious home circa 1270 SqFt boasts 4 bedrooms, 2 stylish bathrooms, a guest cloakroom, lounge, and a contemporary kitchen/breakfast room with bi-fold doors leading to the garden, with the convenience of street parking.

Perfectly situated within easy reach of Oakwood and Southgate Underground stations.

These homes offer a combination of luxury, comfort and excellent transport links, providing an ideal setting for modern family living.

Don't miss the opportunity to make one of these exceptional homes yours. For further details or to arrange a viewing, please contact our New Homes Team on 020 8441 9555



















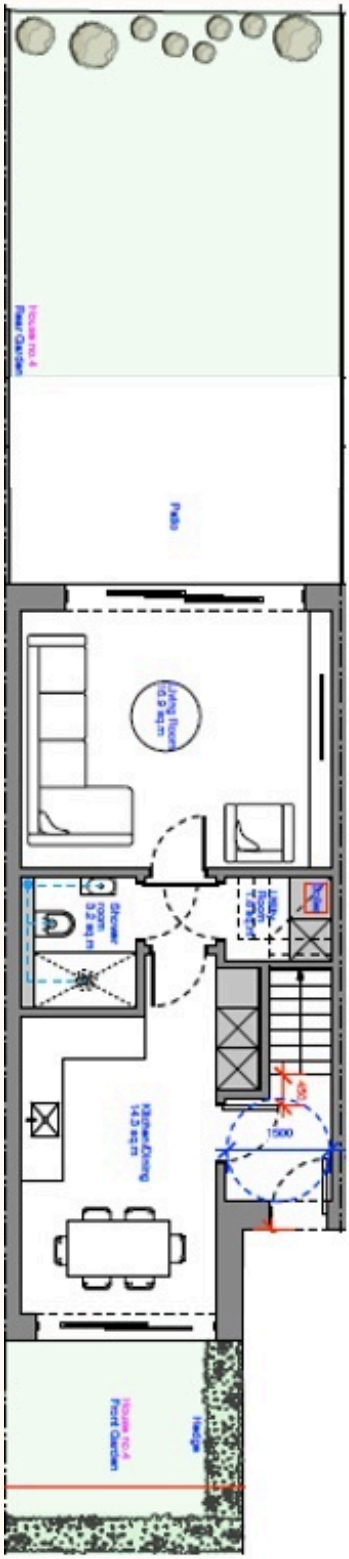
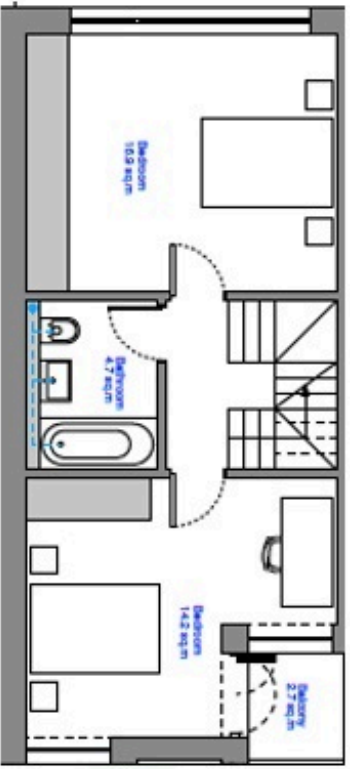
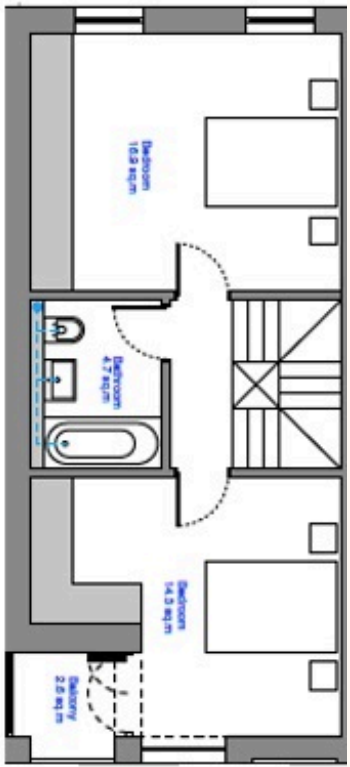














**STATONS**

**PHONE:**  
020 8441 9555

**EMAIL:**  
[newhomes@statons.com](mailto:newhomes@statons.com)



Council Tax - TBC  
Local Authority - Enfield