



DENE ROAD,
London, N11 1ES



12 Dene Road, London N11 1ES

*****CHAIN FREE*****

Set in this popular turning off Russell Lane we are delighted to offer this 4 bedroom semi detached family home.

The property is bright and spacious throughout and comprises a welcoming entrance hall which leads onto a well-proportioned reception/dining room. There is a second reception room, guest cloakroom with shower and contemporary fitted kitchen/diner with a range of fitted appliances.

The second floor comprises 4 bedrooms and a family bathroom. The modern condition of the property ensures a contemporary feel throughout, perfect for those looking for a stylish and updated living space.

The rear garden is mainly laid to lawn with shrubbed borders. The front garden is mainly paved and there is parking for several vehicles.

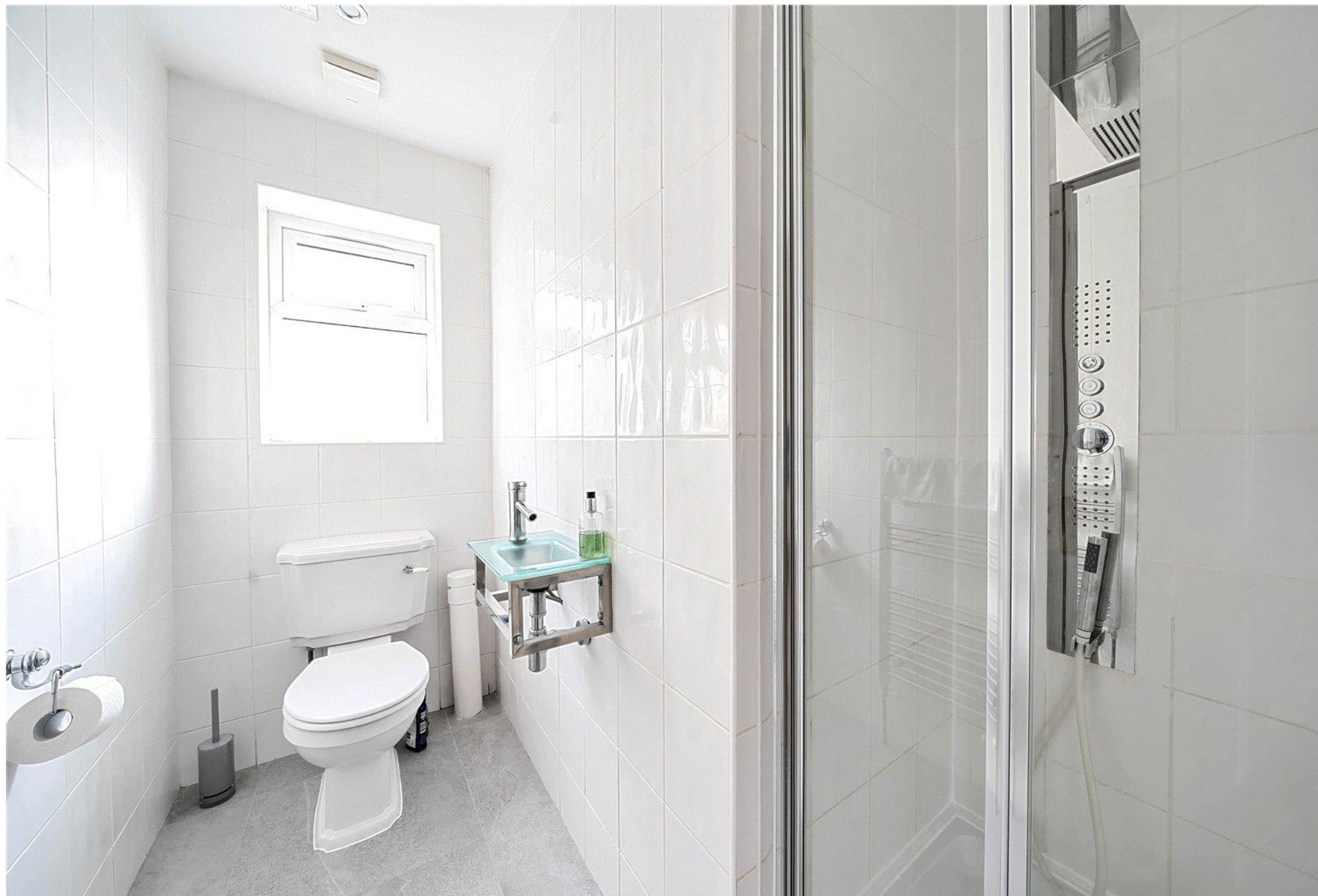


Local Authority: Barnet
Tax Band: F
Tenure: Freehold

















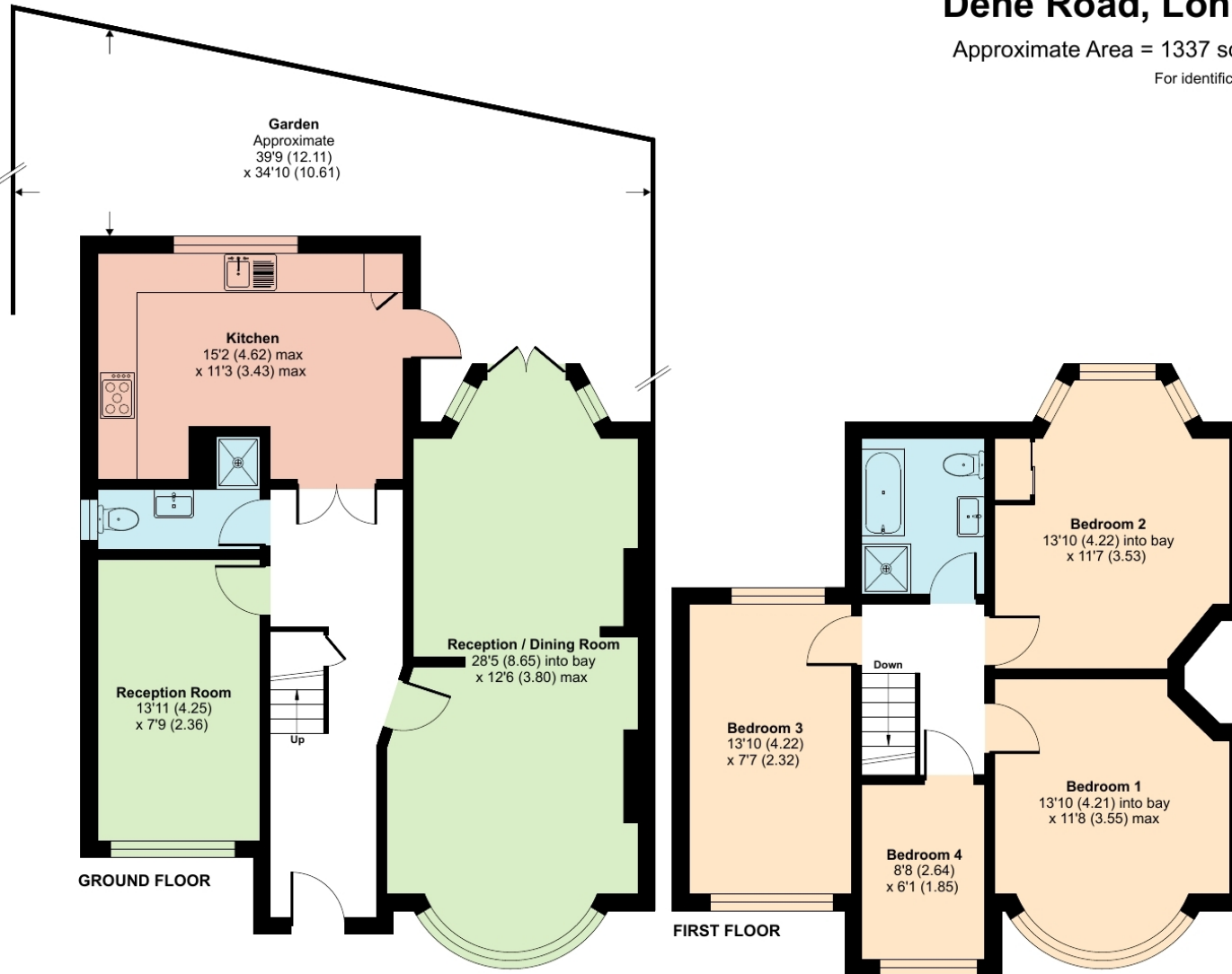




Dene Road, London, N11

Approximate Area = 1337 sq ft / 124.2 sq m

For identification only - Not to scale



Energy Efficiency Rating		
	Current	Potential
Very energy efficient - lower running costs		
(92-)	A	83
(81-91)	B	
(69-80)	C	
(55-68)	D	
(39-54)	E	
(21-38)	F	
(1-20)	G	
Not energy efficient - higher running costs		
England, Scotland & Wales		EU Directive 2002/91/EC



DISCLAIMER: In accordance with the 1993 Misrepresentation Act the agent had not tested any apparatus, equipment, fixtures, fittings or services and so, cannot verify they are in working order, or fit for their purpose. Neither has the agent checked the legal documentation to verify the leasehold/freehold status of the property. The buyer is advised to obtain verification from their solicitor or surveyor. Also, photographs are for illustration only and may depict items which are not for sale or included in the sale of the property. All sizes are approximate. All dimensions include wardrobe spaces where applicable.

