



18 Marriott Road  
Barnet, EN5 4NJ

**STATONS**  
[www.statons.com](http://www.statons.com)



# Marriott Road, Barnet

---

## LOCATION

Situated in this enviable location within walking distance to the 'The Spires' with its large selection of shops, restaurants, boutiques and coffee shops. High Barnet tube station (Northern Line) and New Barnet station are nearby for easy access into London. Barnet has many renowned and highly regarded schools such as Christchurch, Foulds and Queen Elizabeth's Girls and Queen Elizabeth's senior school for boys.



# ACCOMODATION SUMMARY

## **\*\*Stunning Period Semi-Detached 5-Bedroom House\*\***

Welcome to this truly inviting and luxurious 5-bedroom period semi-detached house, which has been thoughtfully extended and fully refurbished, exuding a stylish and sophisticated charm. This spacious property is well-lit throughout, offering a bright and airy living environment. The property boasts a beautifully landscaped garden and a charming patio area, perfect for relaxing or entertaining guests. Conveniently situated in a sought-after area, this home offers easy access to local amenities, schools, and transport links.

### Key Features:

- Period semi-detached house
- 5 bedrooms
- Inviting and luxurious feel
- Stylish and sophisticated design
- Spacious and well-lit interiors
- Beautiful garden and patio area
- Convenient location with easy access to amenities

Don't miss out on the opportunity to own this stunning property that seamlessly blends modern comforts with period charm.









































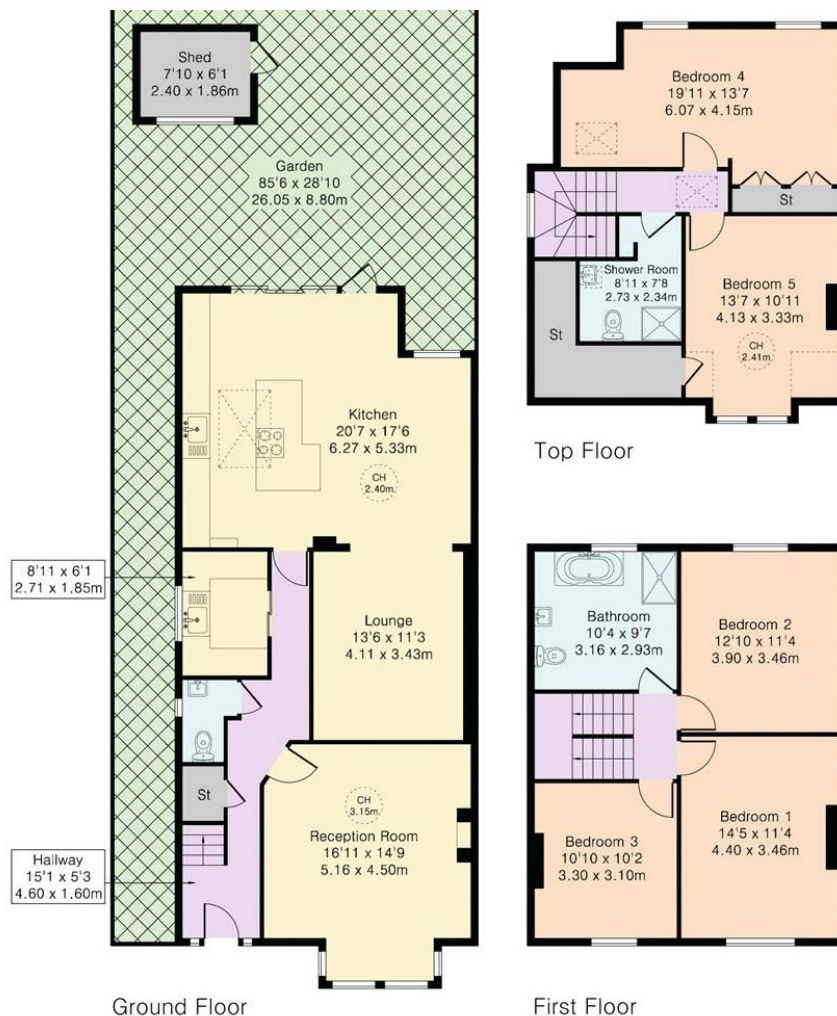








Local Authority: Barnet  
 Council Tax Band: G  
 Tenure: Freehold



Energy Efficiency Rating		
	Current	Potential
Very energy efficient - lower running costs		
(92+) <b>A</b>		
(81-91) <b>B</b>		
(69-80) <b>C</b>		
(55-68) <b>D</b>		
(39-54) <b>E</b>		
(21-38) <b>F</b>		
(1-20) <b>G</b>		
Not energy efficient - higher running costs		
England, Scotland & Wales	EU Directive 2002/91/EC	

Current: 76  
 Potential: 83



