



OAKLEIGH PARK SOUTH,
London, N20 9JU



18b Oakleigh Park South

**** A Rare Gem For The Market **** a spacious detached bungalow spanning over 2,200 sq ft, offering exceptional potential for downsizers seeking generous living space and a flexible layout. Set within a private secluded setting surrounded by beautifully landscaped wrap-around garden, the property is bathed in natural light throughout, creating a bright and welcoming atmosphere.

With the option of 2 to 3 bedrooms, the home features two large bathrooms, providing ample comfort and convenience. The two expansive reception rooms offer versatile living and entertaining spaces, both with direct access to the garden, perfect for enjoying indoor-outdoor living. A separate spacious eat-in kitchen provides great space for family meals.

Additional highlights include a private driveway, a garage, and additional parking. This property is a perfect choice for those looking to downsize without compromising on space or comfort.

Oakleigh Park South is a highly sought after address close to the shops and restaurants of Whetstone High Road and transport links at Totteridge & Whetstone underground (Northern Line) and Oakleigh Park mainline station (Moorgate & Kings Cross Approx. 25 Minutes).



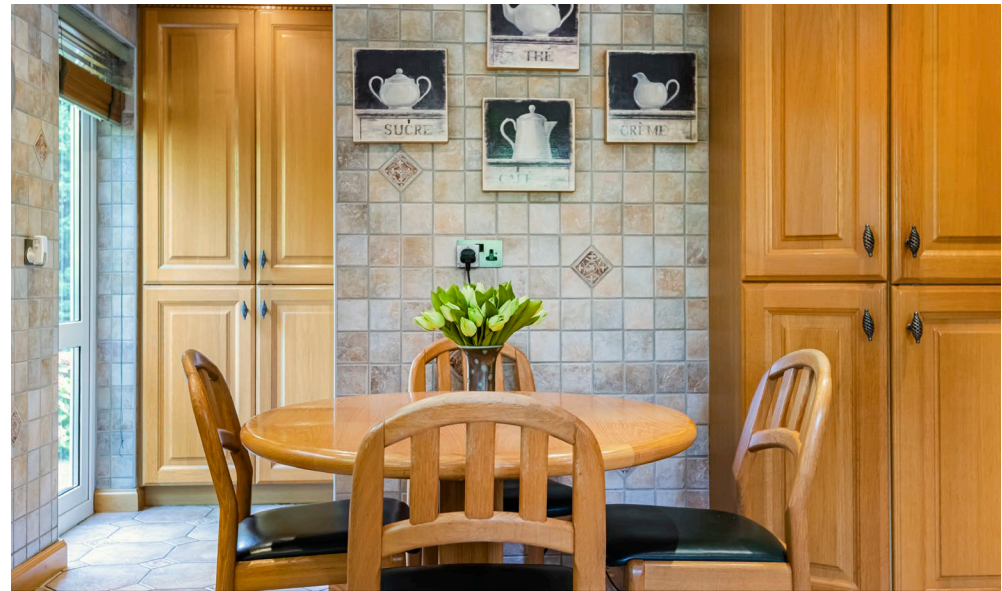
Local Authority: Barnet
Tax Band: G
Tenure: Freehold







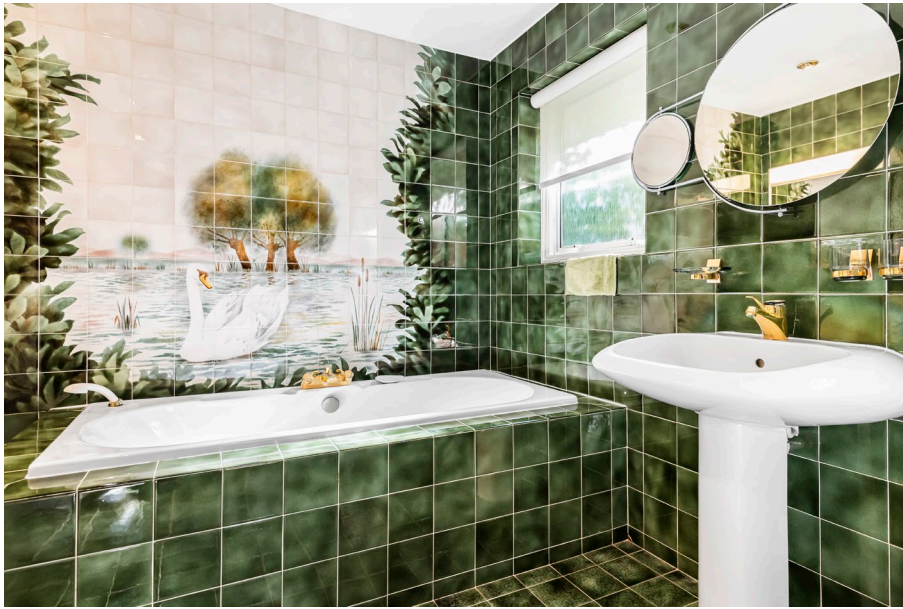


















Approximate Gross Internal Area 2284 sq ft - 212 sq m



Energy Efficiency Rating		Current	Potential
Very energy efficient - lower running costs			
(95-100)	A		
(81-94)	B		
(69-80)	C		82
(55-68)	D	56	
(39-54)	E		
(21-38)	F		
(1-20)	G		
Not energy efficient - higher running costs			
England, Scotland & Wales EU Directive 2002/91/EC			



DISCLAIMER: In accordance with the 1993 Misrepresentation Act the agent had not tested any apparatus, equipment, fixtures, fittings or services and so, cannot verify they are in working order, or fit for their purpose. Neither has the agent checked the legal documentation to verify the leasehold/freehold status of the property. The buyer is advised to obtain verification from their solicitor or surveyor. Also, photographs are for illustration only and may depict items which are not for sale or included in the sale of the property. All sizes are approximate. All dimensions include wardrobe spaces where applicable.

