



Aurora, 59 Myddelton Park  
London, N20 0JJ

# Aurora, 59 Myddelton Park

---

**\*\* STUNNING COMPLETEY REFURBISHED AND EXTENDED PERIOD STYLE RESIDENCE \*\***

This stunning recently completed five-bedroom semi-detached house is located in one of the areas most sought-after residential locations.

This beautifully presented property boasts a spacious landscaped garden, ideal for outdoor entertaining, along with secure off-street parking for convenience. The ground floor comprises a spacious reception hall entrance, a bright and airy living room complete with an original period feature fireplace, large guest cloakroom/wc, a modern bespoke designed fitted kitchen with integrated Miele and Siemens appliances, and a separate open plan dining area with bifold doors that lead directly onto the garden, plus a fully fitted laundry/utility room complete with Miele appliance.

An illuminated staircase rises to the spacious first floor landing where you will find the principal bedroom, with sliding doors that overlook the gardens and a large en suite shower room plus three further bedrooms, one with en suite shower room and a family bathroom .wc.

On the second floor there is a further principal/5th bedroom complete with dressing room and en suite bathroom.

The property benefits from ample natural light throughout, creating a warm and inviting atmosphere. and additional features include; Lutron lighting, fitted wardrobes, Wylo Westminster herringbone wood flooring, underfloor heating, Saxony twist carpet, recessed LED lighting. Please see full specification in brochure.

Aurora is conveniently situated close to North Middlesex Golf Course, Totteridge & Whetstone underground station, Whetstone shopping centre, Friary Park, and sought after local schools,

This property offers the perfect blend of comfort and convenience for modern family living. Don't miss out on this fantastic opportunity to own a truly exceptional home. Contact us today to arrange a viewing.















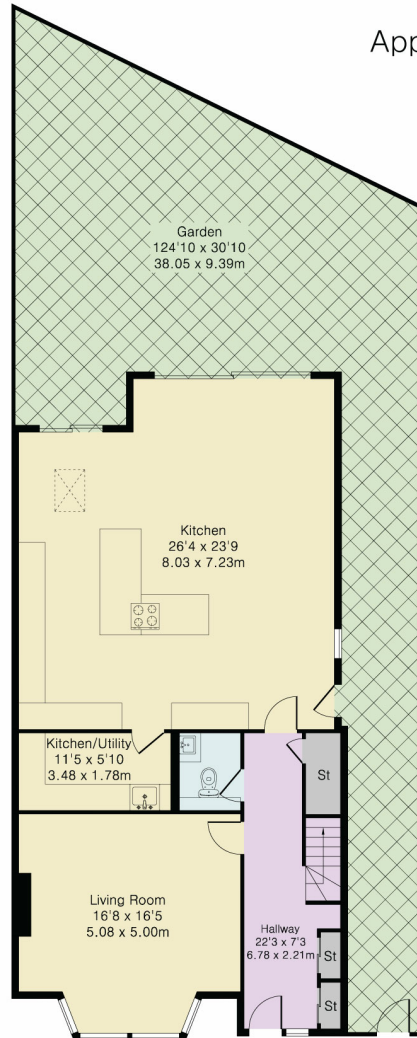




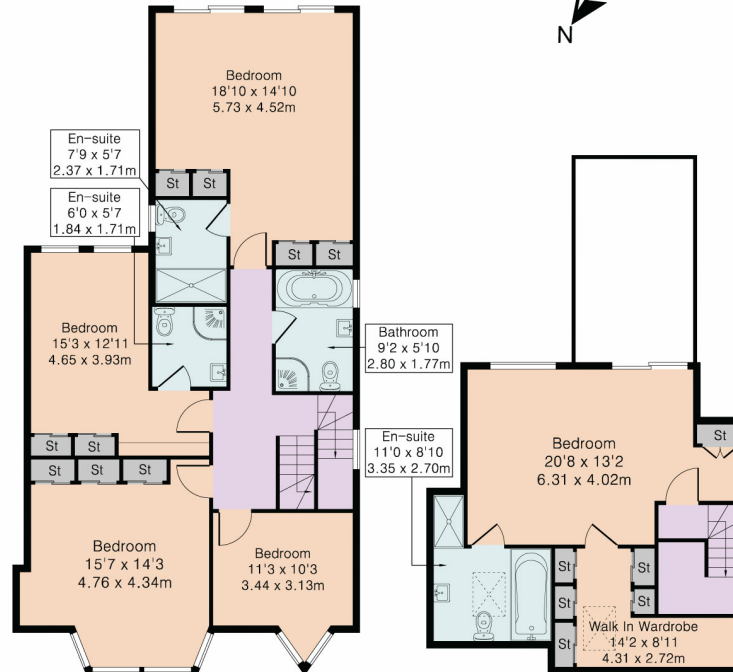




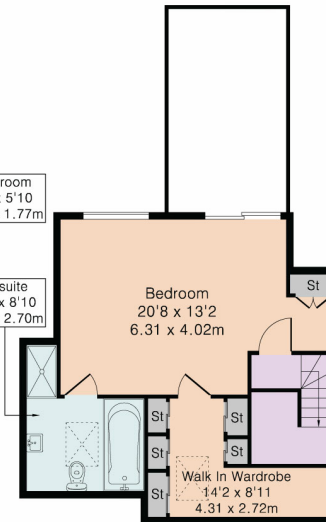
Approximate Gross Internal Area 2559 sq ft – 238 sq m  
 Ground Floor Area 1115 sq ft – 104 sq m  
 First Floor Area 981 sq ft – 91 sq m  
 Second Floor Area 463 sq ft – 43 sq m



Ground Floor



First Floor



Second Floor



Energy Efficiency Rating		Current	Potential
Very energy efficient - lower running costs			
(82+)	<b>A</b>		
(61-81)	<b>B</b>		
(49-60)	<b>C</b>		
(34-48)	<b>D</b>		
(29-33)	<b>E</b>		
(21-28)	<b>F</b>		
(1-20)	<b>G</b>		
Not energy efficient - higher running costs			
		79	82
England, Scotland & Wales		EU Directive 2002/91/EC	



DISCLAIMER: In accordance with the 1993 Misrepresentation Act the agent had not tested any apparatus, equipment, fixtures, fittings or services and so, cannot verify they are in working order, or fit for their purpose. Neither has the agent checked the legal documentation to verify the leasehold/freehold status of the property. The buyer is advised to obtain verification from their solicitor or surveyor. Also, photographs are for illustration only and may depict items which are not for sale or included in the sale of the property. All sizes are approximate. All dimensions include wardrobe spaces where applicable.

## Kitchen

- Bespoke designed kitchen
- Recessed LED lighting to worktop
- Carrera worktops & splashbacks
- Double stainless-steel sink
- stainless-steel Extractor fan
- Quooker filtered tap with
  - o Hot water
  - o Cold water
  - o Sparkling water
- Miele Appliances
  - o 2 x 60cm ovens
  - o Combination microwave/oven
  - o Coffee machine
  - o Touch control Induction hob
  - o Wine cooler
- Siemens full height integrated fridge
- Siemens full height integrated freezer
- Remote controlled electric skylight
- Remote controlled electric blinds
- Modern Recessed Ceilings with concealed LED strips
- Lutron controls
- Astro recessed spotlights
- Xylo Westminster Herringbone flooring
- Aluminium doors to rear
- Stainless Steel power sockets with USB ports
- Speakers to ceilings

## Laundry

- Fitted bespoke kitchen and storage
- Carrera worktop & splashback
- Large stainless-steel sink
- Grohe pull out spray tap
- Miele washing machine
- Miele Dryer
- Stainless Steel power sockets with USB ports

## Lounge

- Original fireplace
- Bespoke design chandelier
- Modern Recessed Ceilings with concealed LED strips
- Lutron controls
- Astro recessed spotlights
- Remote controlled electric blinds
- Speakers to ceilings
- Xylo Westminster Herringbone flooring

## Entrance Hall

- Coat cupboard
- Cloakroom
  - o Wall hung Duravit toilet
  - o Duravit basin
  - o Vado design mixer tap
- Ornate coving to ceilings
- Xylo Westminster Herringbone flooring to hallway & cloakroom
- Saxony twist pile carpets to stairs
- Chrome Stair rod feature to carpets
- Worcester Bosch Greenstar System Boiler
- 300l cylinder

## Master Bedroom

- Bespoke design chandelier
- Designed Fitted wardrobes
- Saxony twist pile carpets
- Ornate coving to ceilings
- Remote controlled electric blinds
- Stainless Steel power sockets with USB ports
- Speakers to ceilings
- Ensuite bathroom
  - o Walk-in shower
  - o Hansgrohe "ShowerSelect" mixer control
  - o Wall hung toilet
  - o Porcelain tiles to floor and walls
  - o Modern Recessed Ceilings with concealed LED strips
  - o Laufen stone basin
  - o LED mirror with wi-fi programable

## **Family Bathroom**

- Free standing bath & taps
- Laufen washbasin with touchless Grohe taps
- RAK touchless toilet
- Walk-in shower with Hansgrohe "ShowerSelect" mixer control
- Modern Recessed Ceilings with concealed LED strips Porcelain tiles to floor and walls

## **Loft Room**

- Saxony twist pile carpets
- Remote controlled electric blinds
- Stainless Steel power sockets with USB ports
- Speakers to ceilings
- Ensuite bathroom
  - o Freestanding bath & taps
  - o Walk-in shower
  - o Hansgrohe "ShowerSelect" mixer control
  - o Wall hung toilet
  - o Porcelain tiles to floor and walls
  - o Modern Recessed Ceilings with concealed LED strips
- Wardrobe Room with
  - o Designed Fitted wardrobes

## **Bedrooms**

- Saxony twist pile carpets
- Designed Fitted wardrobes
- Remote controlled electric blinds
- Designed Chandeliers
- Stainless Steel power sockets with USB ports
- Speakers to ceilings

## **General**

- Xylo Westminster Herringbone flooring
- Remote controlled Electric blinds to all rooms.
- Underfloor heating to all rooms controlled via app
- Double glazed throughout
- Oversized bespoke designer doors
- 3mt High ceilings
- 10 year building warranty

## **Lighting**

- Lutron colour adjustable lighting to ground floor.
- Recessed LED lighting to all rooms
- Recessed Dimming LED downlighting
- Led strip lighting features to stairs.
- Feature chandelier light fittings to lounge and bedrooms.

## **Security**

Pinar aluminium hi-security front door with

- LED lighting
- Electric screen view

Ajax App controlled smart alarm system

HIK Vision Ultra HD CCTV

Remote controlled security bollard to drive

## **Electrics**

- Wall sockets with USB charging in all rooms
- Wired for multi room audio with ceiling speakers throughout.
- CAT6 networking to every room
- Cable for Sky Q TV/Virgin etc.
- Fibre broadband

## **Exterior**

- Landscaped garden by Madeline Davis
- Planted borders (shrubs/trees)
- Lawned garden
- Porcelain tiled patio
- Resin bounded pathways.
- External Lighting throughout.
- Resin bounded driveway.



STATONS  
TOTTERIDGE

28-30 Totteridge Lane, Totteridge, London, N20 9QJ | Tel: 020 8445 3694 | Email: [totteridge@statons.com](mailto:totteridge@statons.com)

**STATONS**  
[www.statons.com](http://www.statons.com)