

STATONS

www.statons.com

Brookmans Avenue

Brookmans Park



Brookmans Avenue

Brookmans Park, Hertfordshire, AL9 7QJ

Discover the epitome of luxurious living in this magnificent 7-bedroom, 5-bathroom detached family home, spanning an impressive 4955 square feet. Nestled in the prestigious area of Brookmans Park, this property offers unparalleled comfort, space, and elegance.

Key Features:

Expansive Living Space: This property boasts three large reception rooms, perfect for entertaining guests, family gatherings, or simply enjoying the tranquillity of your own space.

Spacious Bedrooms: Seven generously sized bedrooms provide ample room for family members and guests, ensuring everyone has their own private retreat.

Modern Bathrooms: With five well-appointed bathrooms, including en-suites, convenience and luxury are at the forefront of this home's design.

Large Garden: Step outside to a beautifully landscaped large garden, offering a serene escape for outdoor activities, gardening, or relaxing in the sunshine.

Ample Off-Street Parking: The property features ample off-street parking, providing ease and convenience for multiple vehicles.

Location: Situated in the sought-after Brookmans Park, this home benefits from a peaceful, family-friendly environment while being close to local amenities, excellent schools, and transport links. Enjoy the perfect blend of countryside charm and urban convenience.

This extraordinary property is a rare find, offering an exquisite lifestyle in one of the most desirable locations. Don't miss the opportunity to make this dream home your own. Contact us today to arrange a viewing!

Council Band H

Welwyn/Hatfield Council





















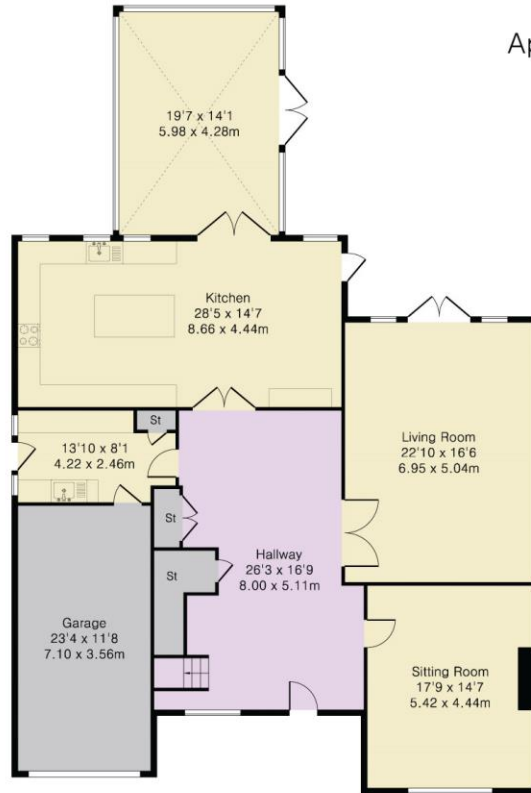




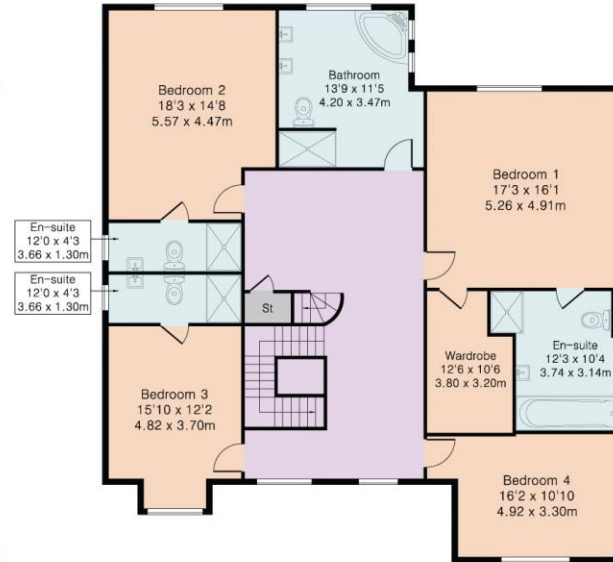


Energy Efficiency Rating		
	Current	Potential
<i>Very energy efficient - lower running costs</i>		
(92+) A		
(81-91) B		
(69-80) C		
(55-68) D	68	74
(39-54) E		
(21-38) F		
(1-20) G		
<i>Not energy efficient - higher running costs</i>		
England, Scotland & Wales	EU Directive 2002/91/EC	

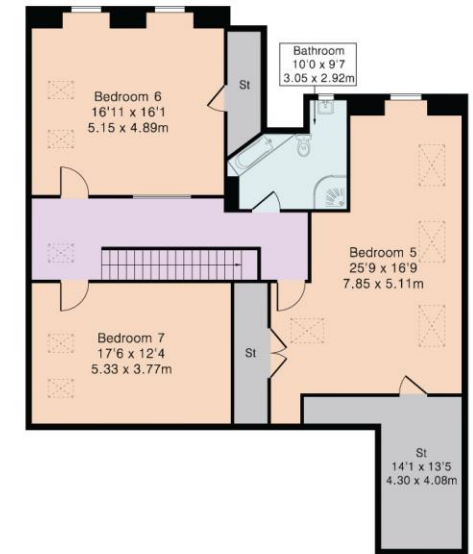
Approximate Gross Internal Area 5307 sq ft – 493 sq m
 Ground Floor Area 2184 sq ft – 203 sq m
 First Floor Area 1837 sq ft – 171 sq m
 Second Floor Area 1286 sq ft – 119 sq m



Ground Floor



First Floor



Second Floor

STATONS

www.statons.com



STATONS PREMIER LETTINGS

1/2 Hadley Parade
Barnet
HERTS
EN5 5SX
020 8441 9796
lettings.office@statons.com