

**43 Oakleigh Crescent, London, N20 0BT**



**STATONS**

[www.statons.com](http://www.statons.com)

## 43 Oakleigh Crescent, London, N20 0BT

Step inside this charming and modern semi-detached maisonette boasting 3 double bedrooms, 1 Bathroom, 1 Reception, generous kitchen diner and well-proportioned cabin as an extra office or studio space making it the perfect family home. The property features a delightful garden, ideal for outdoor entertaining or simply relaxing in the sunshine.

As you enter the house, you are greeted by a bright and spacious hallway which leads into the living area, perfect for cosy nights in with loved ones. The kitchen is sleek and modern, offering ample storage space and good appliances for all your culinary needs.

Further into the house you will find three double bedrooms, each offering plenty of natural light and storage space. The bathroom is stylishly designed and equipped with all the necessary amenities for your comfort.

Oakleigh Crescent is located on a quiet residential no-through road in a desirable neighbourhood, close to local amenities and excellent schools, this property is a must-see for anyone looking for a comfortable and convenient place to call home. Book your viewing today and make this house your own!







































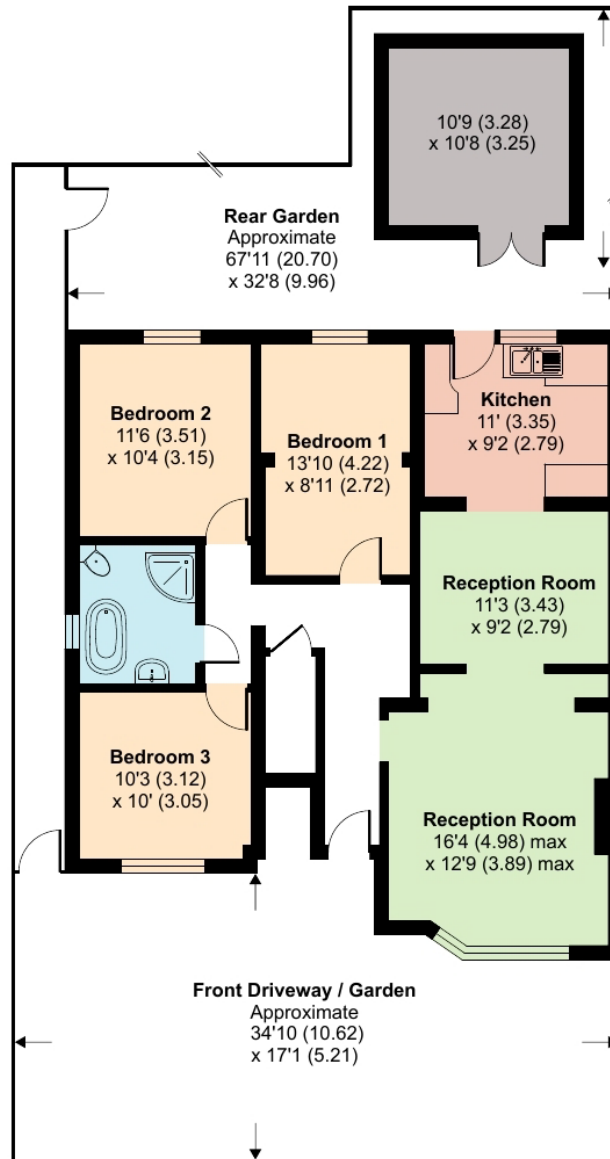
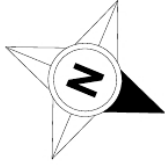
# Oakleigh Crescent, London, N20

Approximate Area = 1013 sq ft / 94.1 sq m

Outbuilding = 115 sq ft / 10.6 sq m

Total = 1128 sq ft / 104.7 sq m

For identification only - Not to scale



**GROUND FLOOR**



# STATONS

www.statons.com



The Property Ombudsman

Energy Efficiency Rating		Current	Potential
Very energy efficient - lower running costs			
(92+)	<b>A</b>		
(81-91)	<b>B</b>		
(69-80)	<b>C</b>	<b>77</b>	<b>77</b>
(55-68)	<b>D</b>		
(39-54)	<b>E</b>		
(21-38)	<b>F</b>		
(1-20)	<b>G</b>		
Not energy efficient - higher running costs			
England, Scotland & Wales		EU Directive 2002/91/EC	



Council Tax - B  
Local Authority - Barnet

STATONS  
TOTTERIDGE

28-30 Totteridge Lane,  
London, N20 9QL  
020 8445 3694  
totteridge@statons.com