



Pentagon House  
Camlet Way, Hadley Wood, EN4 0LJ

# Pentagon House

A beautifully appointed first floor three-bedroom, two-bathroom luxury apartment benefitting from gated underground parking and two open air terraces. The development was completed in 2017 by the renowned Yogo Group.

The accommodation in this lovely home comprises a dual aspect lounge, well fitted kitchen. There are three bedrooms, two of which have fitted wardrobes, and two bathrooms.

The generous terrace to the rear can be accessed from both the lounge and a bedroom and there is an additional terrace accessed from a bedroom overlooking Beech Hill Avenue.

Perfectly located on the corner of Beech Hill Avenue and Camlet Way within walking distance to Hadley Wood mainline station (which offers a regular service into Moorgate and Kings Cross with a journey time of approximately 30 minutes), local shops, which include restaurants, a hairdressers, a newsagents and a health club. Cockfosters underground station (Piccadilly Line) is approximately 3 miles away as is junction.



























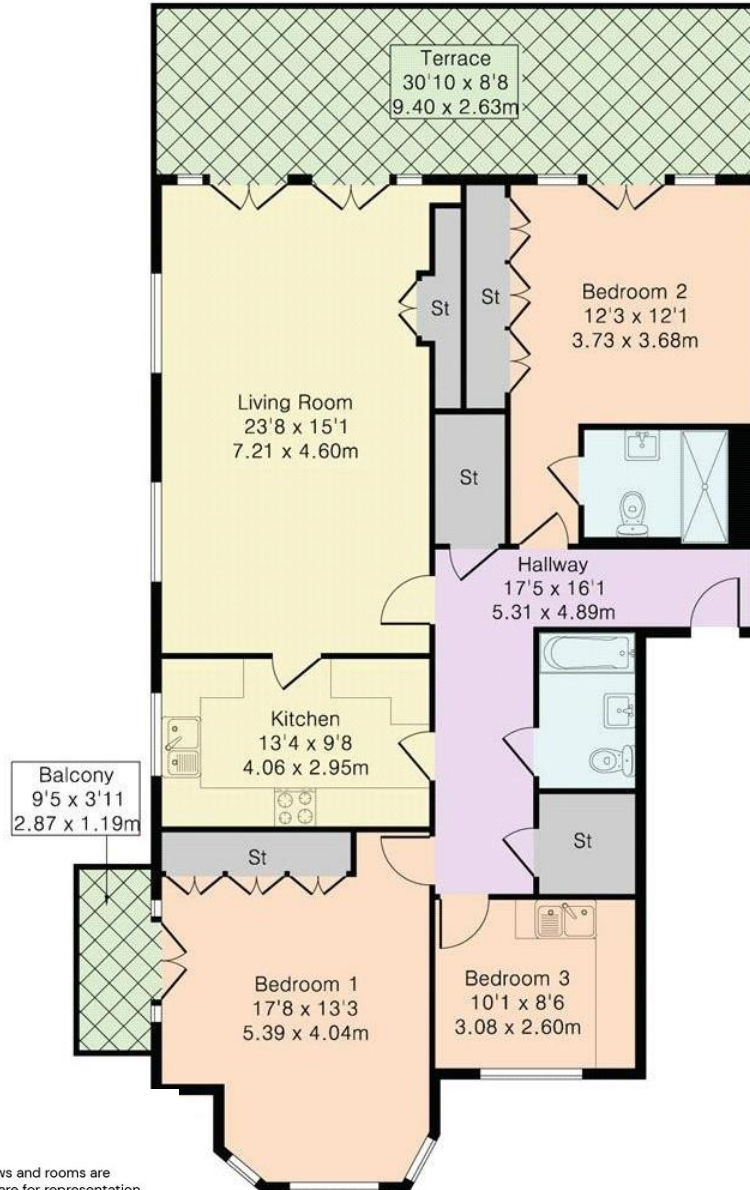








Approximate Gross Internal Area 1257 sq ft – 117 sq m



Energy Efficiency Rating		Current	Potential
Very energy efficient - lower running costs			
(92+)	<b>A</b>		
(81-91)	<b>B</b>	<b>85</b>	<b>85</b>
(69-80)	<b>C</b>		
(55-68)	<b>D</b>		
(39-54)	<b>E</b>		
(21-38)	<b>F</b>		
(1-20)	<b>G</b>		
Not energy efficient - higher running costs			
England, Scotland & Wales		EU Directive 2002/91/EC	



**STATONS**  
**HADLEY WOOD**

10 Crescent West, Hadley Wood,  
Herts, EN4 0EJ

Tel: 0208 440 9797

Email: [hadley@statons.com](mailto:hadley@statons.com)

**STATONS**  
www.statons.com