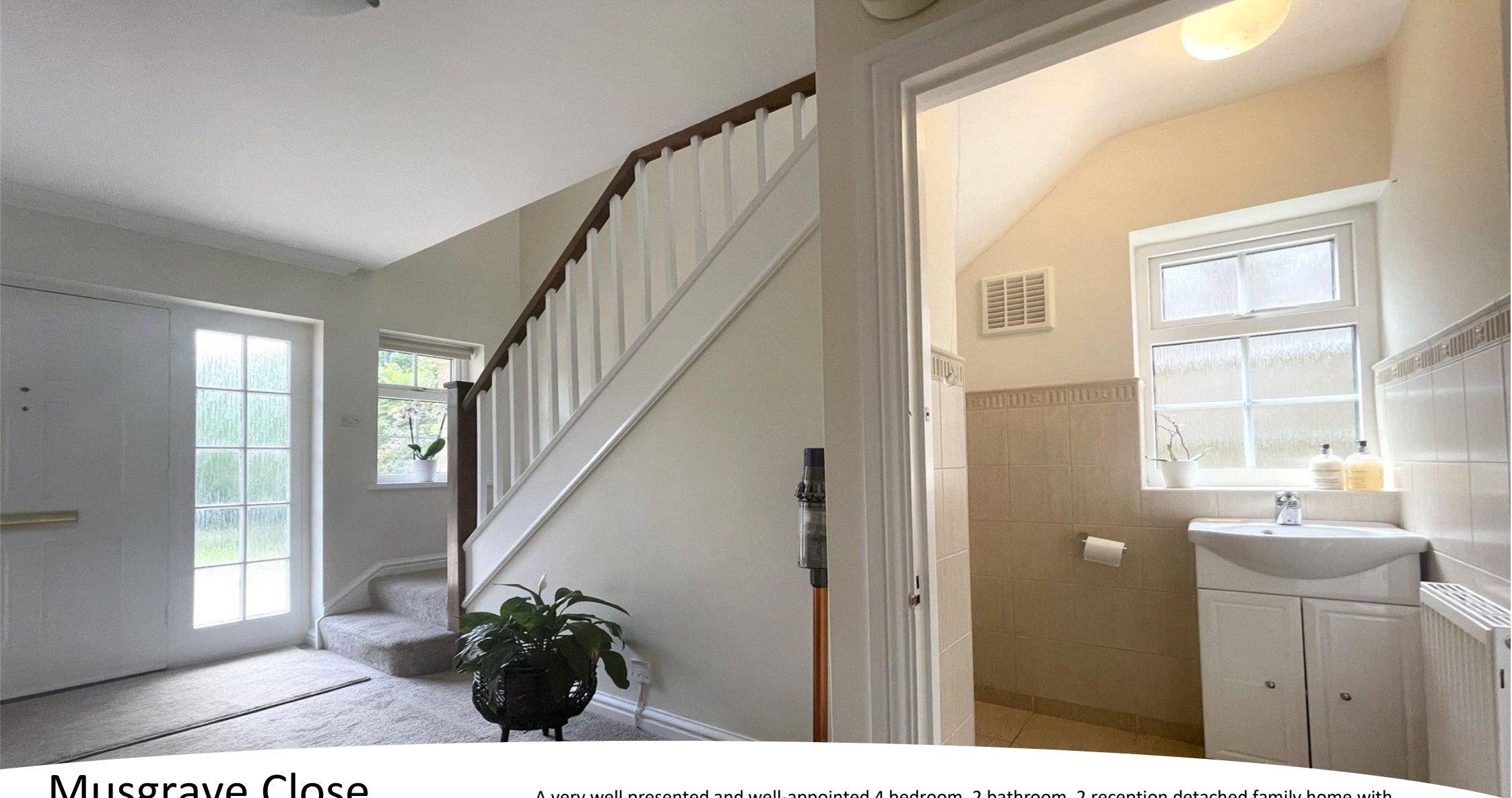


STATONS



Musgrave Close

Hadley Wood, EN5



Musgrave Close
Hadley Wood
Hertfordshire
EN4 0LX

A very well presented and well-appointed 4 bedroom, 2 bathroom, 2 reception detached family home with integral double length garage, off street parking and private rear garden

Council Tax Band G
6 weeks rent as deposit







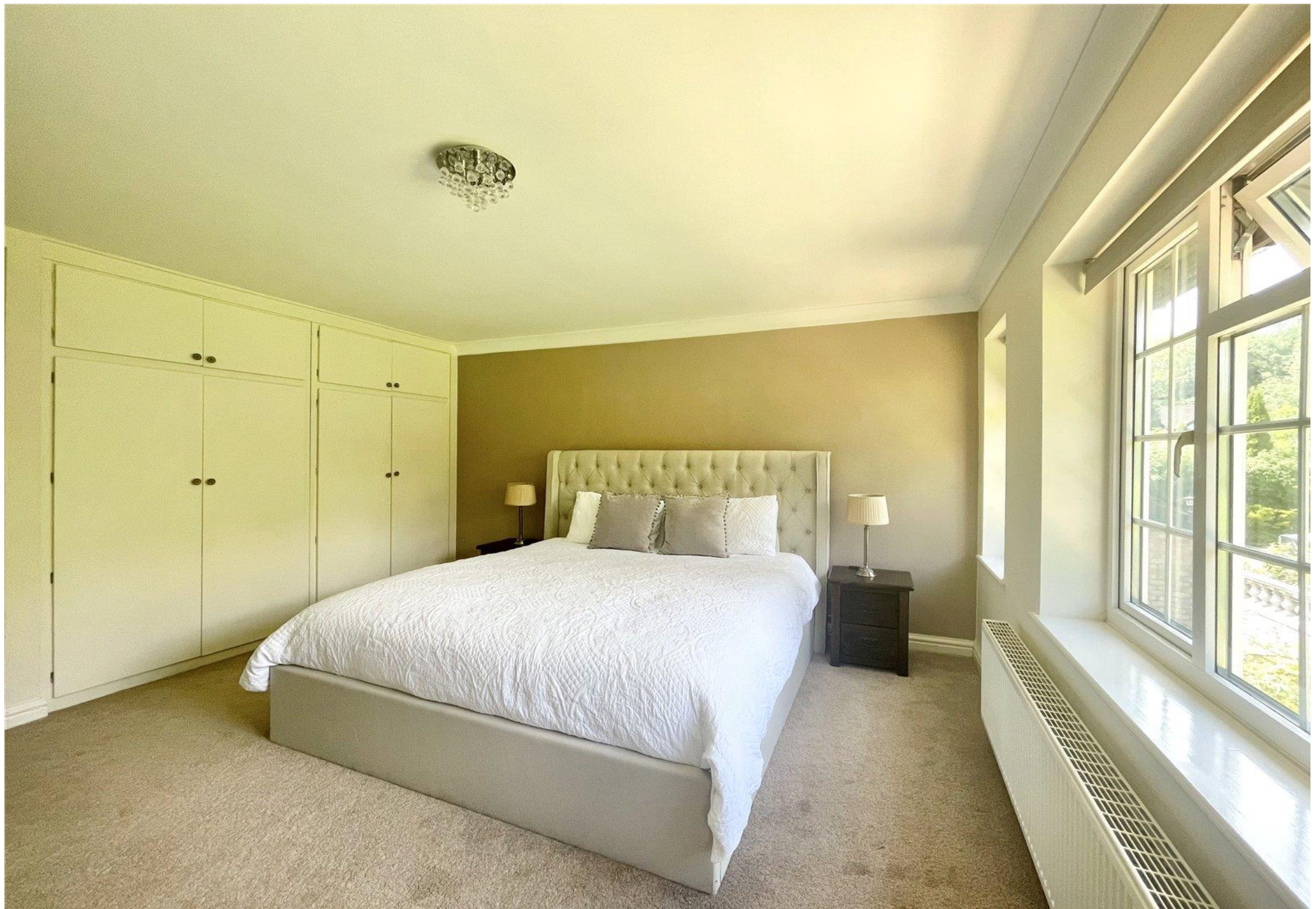






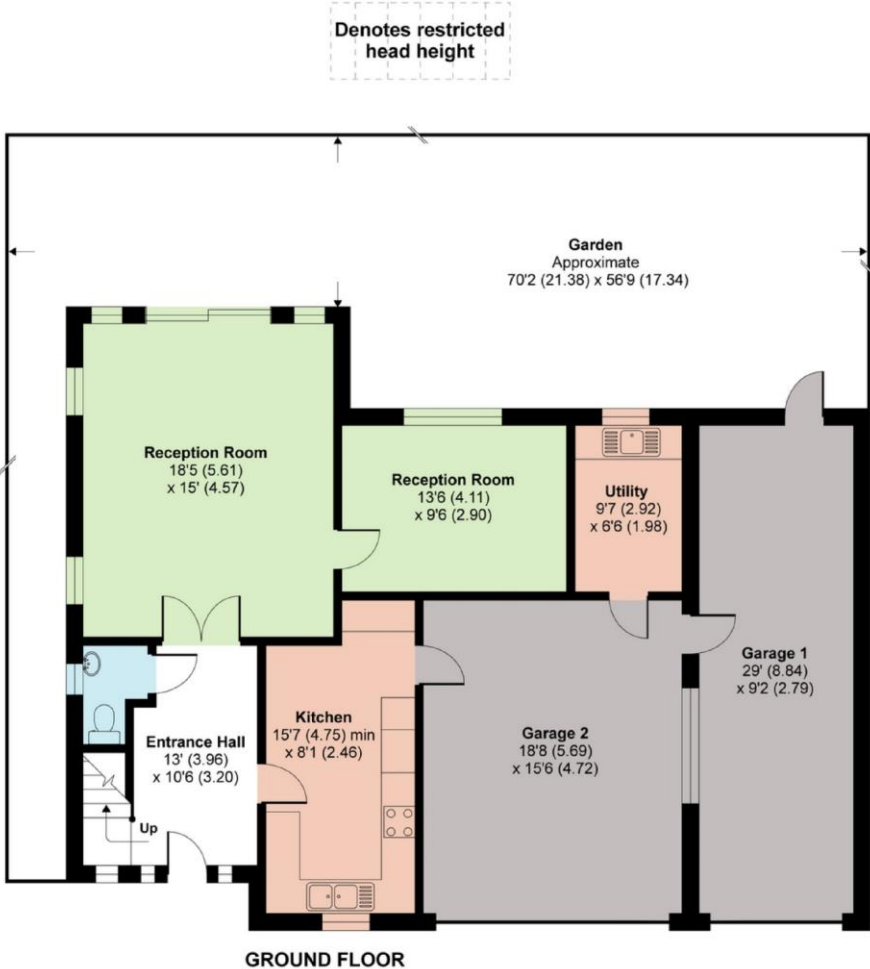






Musgrave Close, Barnet, EN4

Approximate Area = 1710 sq ft / 159 sq m
 Limited Use Area(s) = 46 sq ft / 4.2 sq m
 Garages = 566 sq ft / 52.5 sq m
 Total = 2322 sq ft / 215.7 sq m
 For identification only - Not to scale



Energy Efficiency Rating		Current	Potential
Very energy efficient - lower running costs			
(92-100) A			
(81-91) B			
(69-80) C			
(55-68) D			
(39-54) E			
(21-38) F			
(1-20) G			
Not energy efficient - higher running costs			
England & Wales			
EU Directive 2002/91/EC			
		58	74

RICS Certified Property Measurer
 Floor plan produced in accordance with RICS Property Measurement Standards incorporating International Property Measurement Standards (IPMS2 Residential). ©n/checom 2021. Produced for Statons. REF: 708448

DISCLAIMER: In accordance with the 1993 Misrepresentation Act the agent had not tested any apparatus, equipment, fixtures, fittings or services and so, cannot verify they are in working order, or fit for their purpose. Neither has the agent checked the legal documentation to verify the leasehold/freehold status of the property. The buyer is advised to obtain verification from their solicitor or surveyor. Also, photographs are for illustration only and may depict items which are not for sale or included in the sale of the property, All size are approximate. All dimensions include wardrobe spaces where applicable.

STATONS

STATONS PREMIER LETTINGS

1 HADLEY PARADE
BARNET
HERTS
EN5 5SX

lettings.office@statons.com

020 8441 9796

