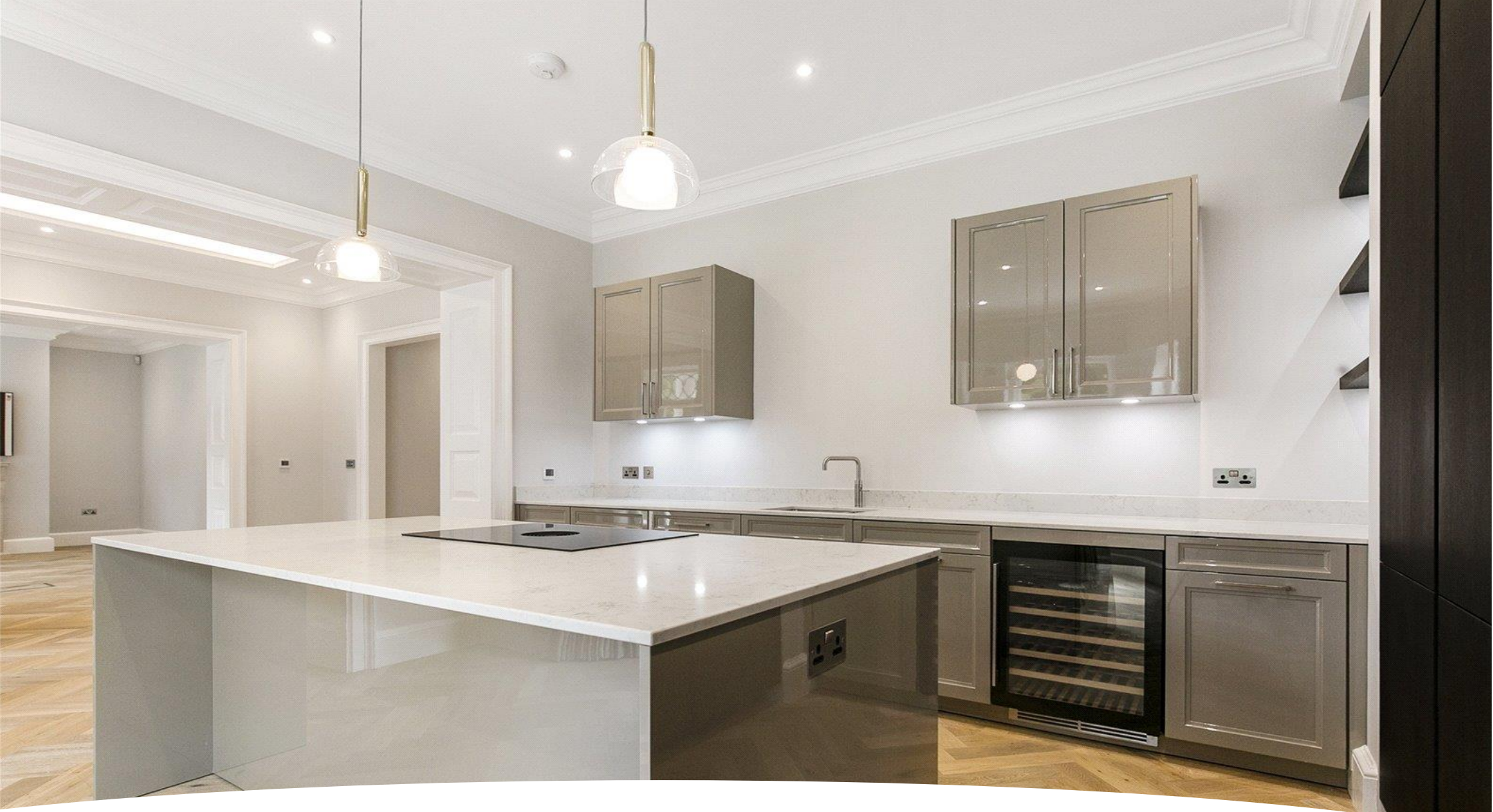


**STATONS**

Totteridge Village, N20







# 96 Totteridge Village

## London

### N20 8AE

Located in the heart of Totteridge Village these five BRAND NEW apartments. On offer is this three bedrooms including en suites, ground floor apartment, with two allocated parking bays under cover, use of communal gardens, modern open plan living with luxury finishing throughout. An unparalleled dialogue between beautiful aesthetics and practicality these five bespoke apartments set within the gated development, will offer five star living.

Council Tax TBC  
6 Weeks Deposit








































Energy Efficiency Rating		Current	Potential
Very energy efficient - lower running costs			
(92+)	<b>A</b>		
(81-91)	<b>B</b>	<b>85</b>	<b>85</b>
(69-80)	<b>C</b>		
(55-68)	<b>D</b>		
(39-54)	<b>E</b>		
(21-38)	<b>F</b>		
(1-20)	<b>G</b>		
Not energy efficient - higher running costs			
England, Scotland & Wales	EU Directive 2002/91/EC		



Ground Floor



Although Pink Plan Ltd ensures the highest level of accuracy, measurements of doors, windows and rooms are approximate and no responsibility is taken for error, omission or misstatement. These plans are for representation purposes only as defined by RICS code of measuring practise. No guarantee is given on total square footage of the property within this plan. The figure icon is for initial guidance only and should not be relied on as a basis of valuation.



**DISCLAIMER:** In accordance with the 1993 Misrepresentation Act the agent had not tested any apparatus, equipment, fixtures, fittings or services and so, cannot verify they are in working order, or fit for their purpose. Neither has the agent checked the legal documentation to verify the leasehold/freehold status of the property. The buyer is advised to obtain verification from their solicitor or surveyor. Also, photographs are for illustration only and may depict items which are not for sale or included in the sale of the property, All size are approximate. All dimensions include wardrobe spaces where applicable.



# **STATONS**

## **STATONS PREMIER LETTINGS**

1 HADLEY PARADE  
BARNET  
HERTS  
EN5 5SX

020 8441 9796

