

The logo for STATONS, featuring the word in a bold, black, sans-serif font on a yellow background, with horizontal lines above and below the text.

**STATONS**

A wide-angle photograph of a modern kitchen interior. The kitchen features light-colored cabinetry, a white countertop, and a central island with a light-colored stone top. A sink with a chrome faucet is visible on the island. The floor is covered in large, light-colored tiles. The walls are a neutral, light color, and the ceiling has recessed lighting.

**Bergamot House**

**Rowantree Road**



**Bergamot House**  
**52 Rowantree Road**  
**Enfield**  
**EN2 8GF**

Bergamot House is a newly converted apartment residency set behind gates with a lift to all floors. All apartments are finished to the highest of standards and benefits from a combination of porcelain flooring and carpets and underfloor heating throughout. The German fitted kitchen benefits from integrated Siemens appliances and wine cooler. Each apartment is wired for SkyQ and Bluetooth surround sound system, and are fully alarmed which is also connected to the gates and communal entrance door and benefit from 24 hour surveillance to exterior and internal communal areas. Each apartment comes with an allocated parking space within the gates.

Enfield offers a relaxing commute, abundant amenities and entertainment as well as plentiful sports facilities including various local gyms, golf clubs, a tennis club and wide-open spaces for you to enjoy.















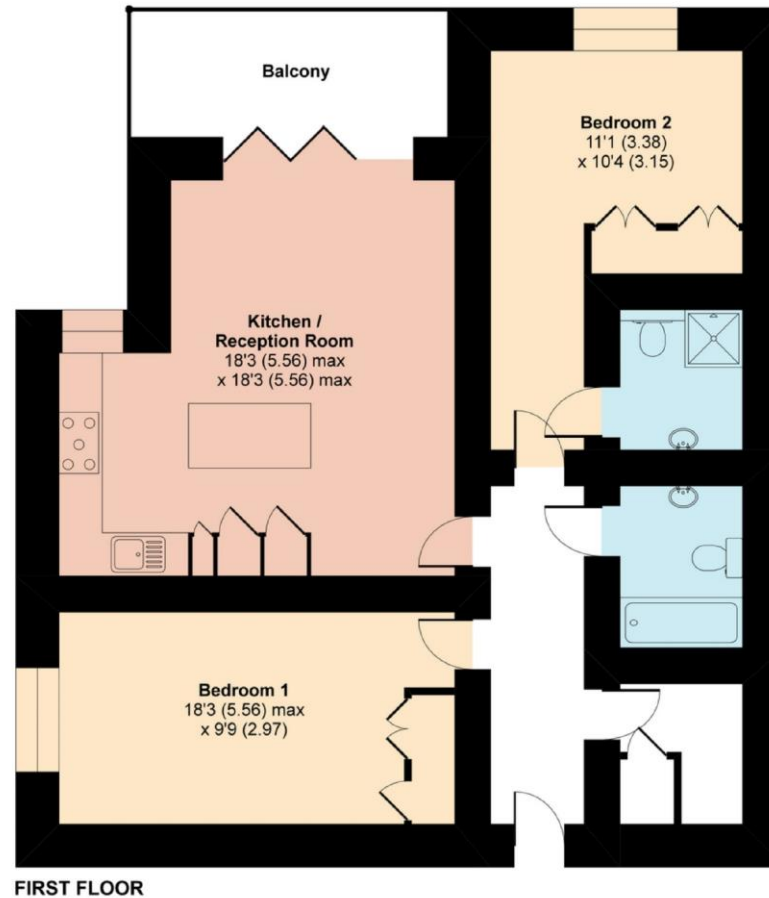




# Rowantree Road, Enfield, EN2

Approximate Area = 973 sq ft / 90.3 sq m

For identification only - Not to scale



Energy Efficiency Rating		Current	Potential
<i>Very energy efficient - lower running costs</i>			
(92-100) <b>A</b>			
(81-91) <b>B</b>			
(69-80) <b>C</b>			
(55-68) <b>D</b>			
(39-54) <b>E</b>			
(21-38) <b>F</b>			
(1-20) <b>G</b>			
<i>Not energy efficient - higher running costs</i>			
<b>England &amp; Wales</b>	EU Directive 2002/91/EC	<b>81</b>	<b>81</b>



Floor plan produced in accordance with RICS Property Measurement Standards incorporating International Property Measurement Standards (IPMS2 Residential). ©nichecom 2021. Produced for Statons. REF: 686285

**DISCLAIMER:** In accordance with the 1993 Misrepresentation Act the agent had not tested any apparatus, equipment, fixtures, fittings or services and so, cannot verify they are in working order, or fit for their purpose. Neither has the agent checked the legal documentation to verify the leasehold/freehold status of the property. The buyer is advised to obtain verification from their solicitor or surveyor. Also, photographs are for illustration only and may depict items which are not for sale or included in the sale of the property. All size are approximate. All dimensions include wardrobe spaces where applicable.



# STATONS

STATONS  
PREMIER LETTINGS

1 HADLEY PARADE  
BARNET  
HERTS  
EN5 5SX

[Lettings.office@statons.com](mailto:Lettings.office@statons.com)

0208 441 9796

