



GLENTREE

HERTFORDSHIRE WD6

STATONS

PROPERTY FEATURES

- Plot extends to approximately 1.4 acres
- 5 Bedrooms & 8 Bathrooms
- 6 Reception Rooms
- Heated Indoor Swimming Pool
- Gymnasium, Sauna and Jacuzzi
- 2 Car garage
- Double gated entrance and ample spaces for parking
- Lush landscaping, private garden, outdoor children games area, productive fruit & vegetable area
- 2 Outdoor loggias
- Numerous sheds, outbuildings and greenhouse
- Lighting, TV's, heating, security, music – all controlled via a modern phone controlled system.
- CCTV monitored
- Service path leading to rear main outbuilding/garage



DESCRIPTION

Glentree offers an exclusive retreat designed for luxurious, private living, surrounded by state-of-the-art security. Accessed through electronically controlled gates, the property's driveway ensures that all incoming vehicles are carefully monitored, enhancing privacy. A recently obtained permit allows the construction of a one-floor annex, which will include a garage and expand a bedroom into a fully self-contained apartment, ideal for an elderly resident, housekeeper, or guests.

The home's interior is both grand and modern, featuring high ceilings, bespoke design elements, and advanced lighting systems. Its spacious layout is ideal for large events, comfortably accommodating over 70 guests. The main foyer opens into an expansive living and dining area, showcasing views of the manicured rear garden



The kitchen, located to the left of the foyer, is a chef's dream, with modern appliances, a large island, and three windows that bathe the space in natural light. A connected family room provides additional living space, and floor-to-ceiling windows offer stunning garden views.

To the right of the foyer is a private study, designed with intricate lighting, alongside a luxurious guest master suite with garden views from large windows. A corridor from the kitchen leads to a wine rack, large utility room, and the property's impressive sports center. This center features an indoor heated swimming pool, sauna, jacuzzi, massage room, gym, and a cigar room. The gym's large windows frame the garden, enhancing the wellness experience.







Access to the first floor is via a grand staircase or a planned passenger lift. The master suite occupies much of this floor, complete with dressing rooms, his-and-hers bathrooms, a shoe display, and a large balcony with sweeping views of the estate. Additional en-suite bedrooms, including one with a walk-in wardrobe, are also located on this floor, as well as a reception room that can serve as a bedroom.



Plans for a circular staircase allow access to the expansive second floor, awaiting the owner's customization.

The estate spans 1.4 acres, with beautifully landscaped gardens, covered loggias, sheds, greenhouses, a koi pond, and a formal lawn. A children's play area and organic fruit and vegetable garden add practicality to the lavish grounds, which also feature ample parking and development rights for future expansion.







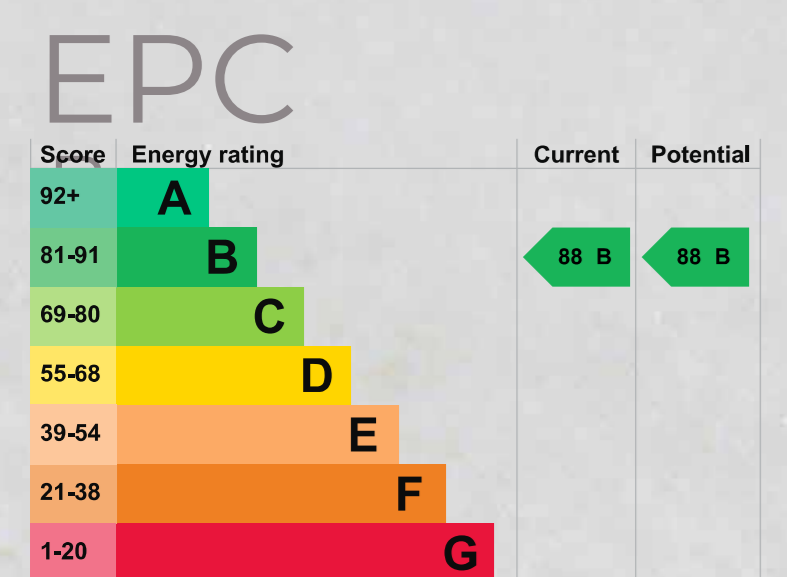
CONTACT US

STATONS

e: primesales@statons.com
 t: 020 8016 4300
 or contact Paul Brown on
 07867 510540

TENURE
 Freehold
 LOCAL
 AUTHORITY

Barnet
 PRICE
 £7,950,000



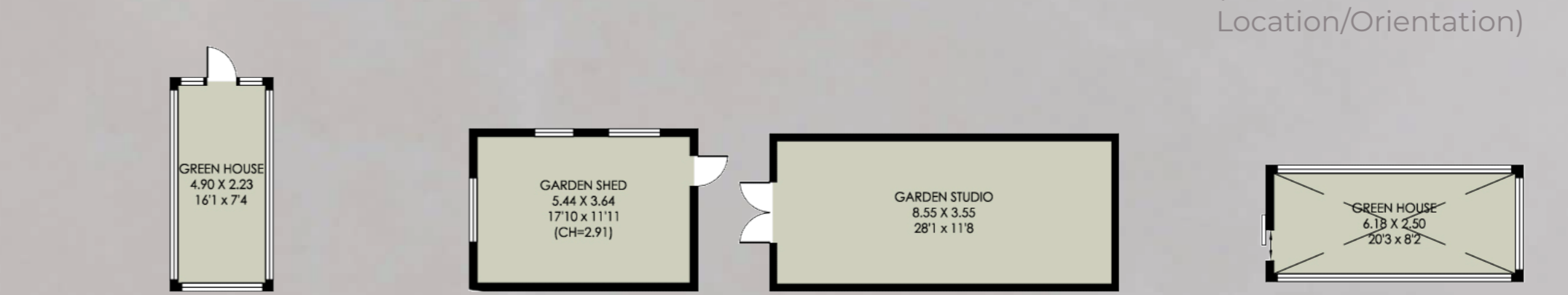
Misrepresentation Act 1967. These particulars are intended only to give a fair description of the property and do not form the basis of a contract or any part thereof. These descriptions and all other information are believed to be correct but their accuracy is in no way guaranteed. September 2024.

APPROXIMATE GROSS INTERNAL FLOOR AREA: 7952 SQ FT / 711 SQ M
 OUTBUILDING AREA: 3371 SQ FT / 313 SQ M
 TOTAL AREA: 11 323 SQ FT / 1024 SQ M
 INCLUDING LIMITED USE AREA: 326 SQ FT / 30 SQ M
 APPROXIMATE SITE AREA: 1.4 ACRE

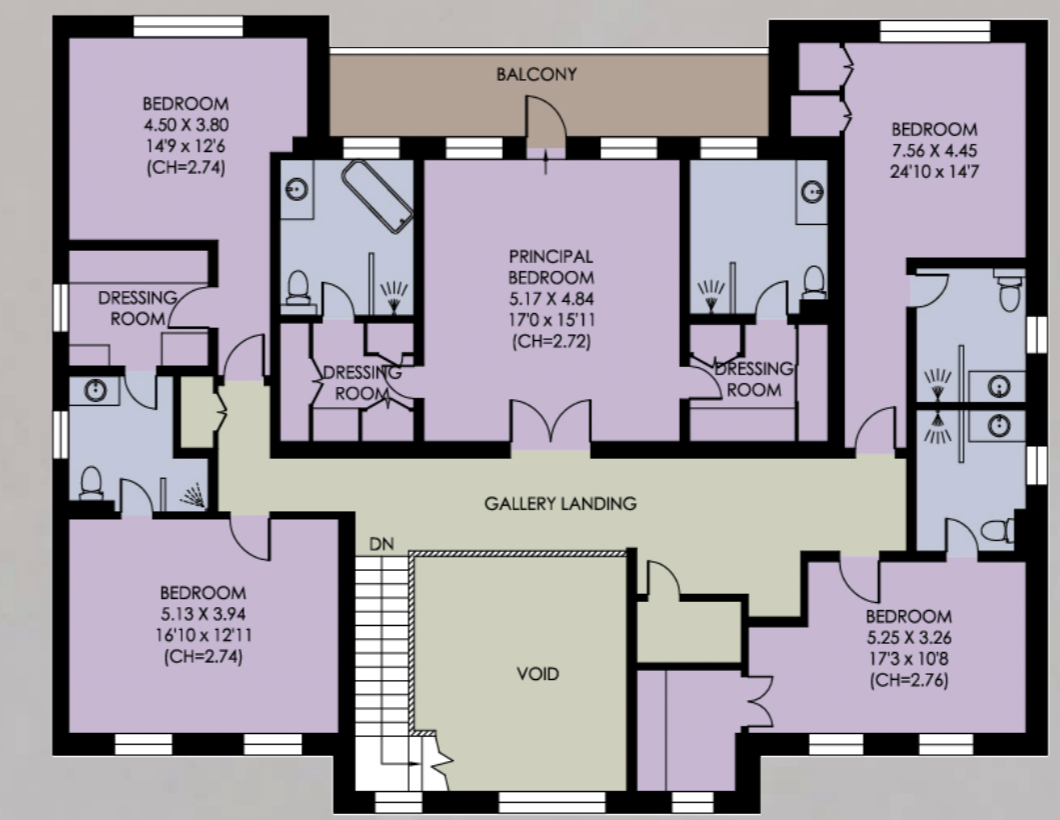


Ground Floor

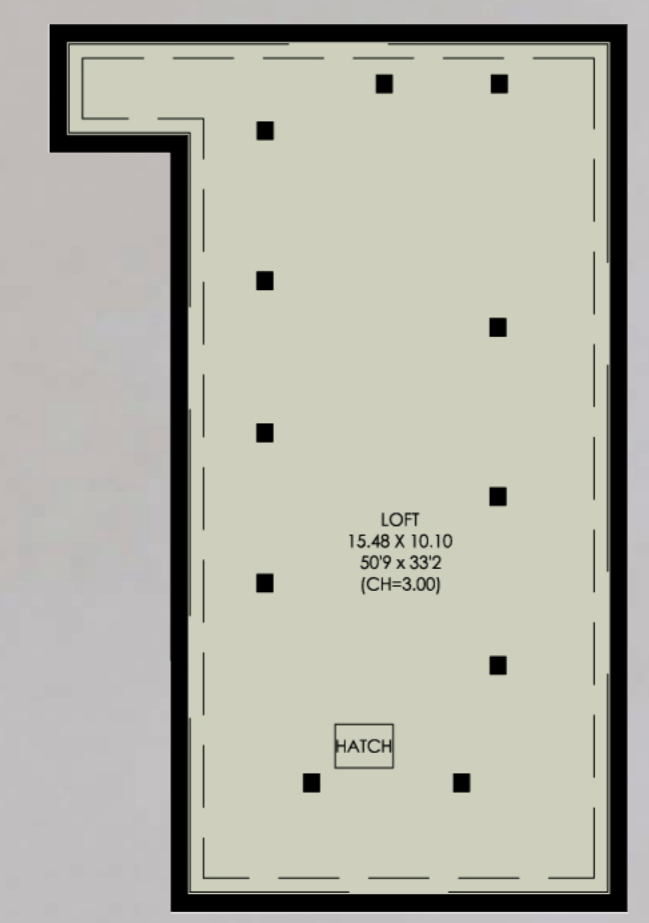
First Floor



(Not Shown In Actual Location/Orientation) (Not Shown In Actual Location/Orientation) (Not Shown In Actual Location/Orientation) (Not Shown In Actual Location/Orientation) (Not Shown In Actual Location/Orientation) (Not Shown In Actual Location/Orientation)



Second Floor



(Not Shown In Actual Location/Orientation)



Site Plan

1.4 ACRE