

STATONS

Bedwell Hall

Bedwell Park



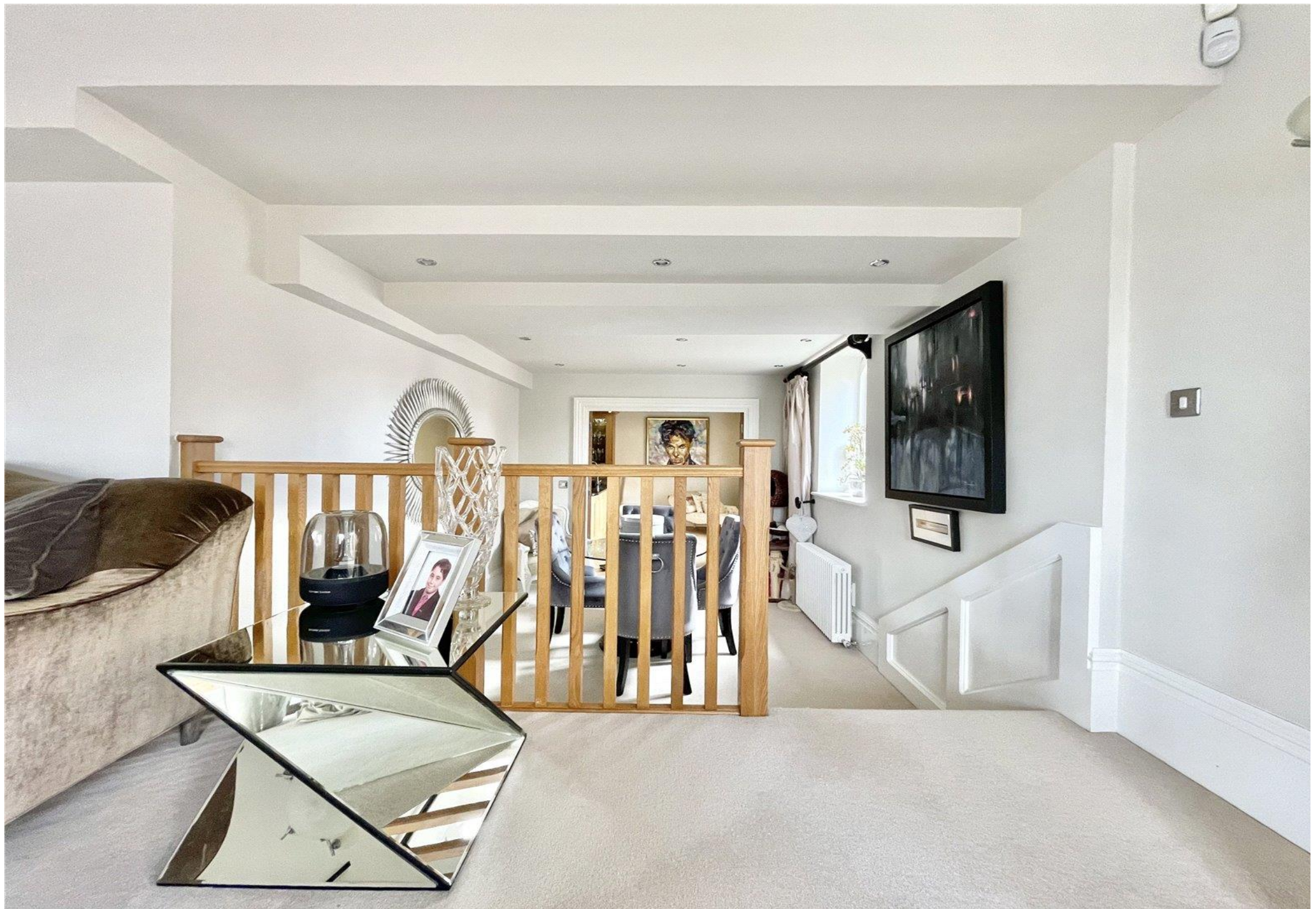
Bedwell Hall
Bedwell Park
Cucumber Lane
AL9 6GJ

A magnificent Grade II listed apartment set in the grounds of Essendon Golf Club with stunning views. The property comprises of a stunning open plan lounge with separate dining area with access to two private balconies. A fitted kitchen opens up to a breakfast area. The ground floor flows nicely around allowing natural light and plenty of entertaining space. The master suite is fitted with wardrobes and large en suite bathroom. The upper levels include two further bedrooms, family bathroom and utility room. The property is spread over 3 levels

Council: Welwyn, Hatfield
Council Tax Band G
Deposit of 5 weeks rent



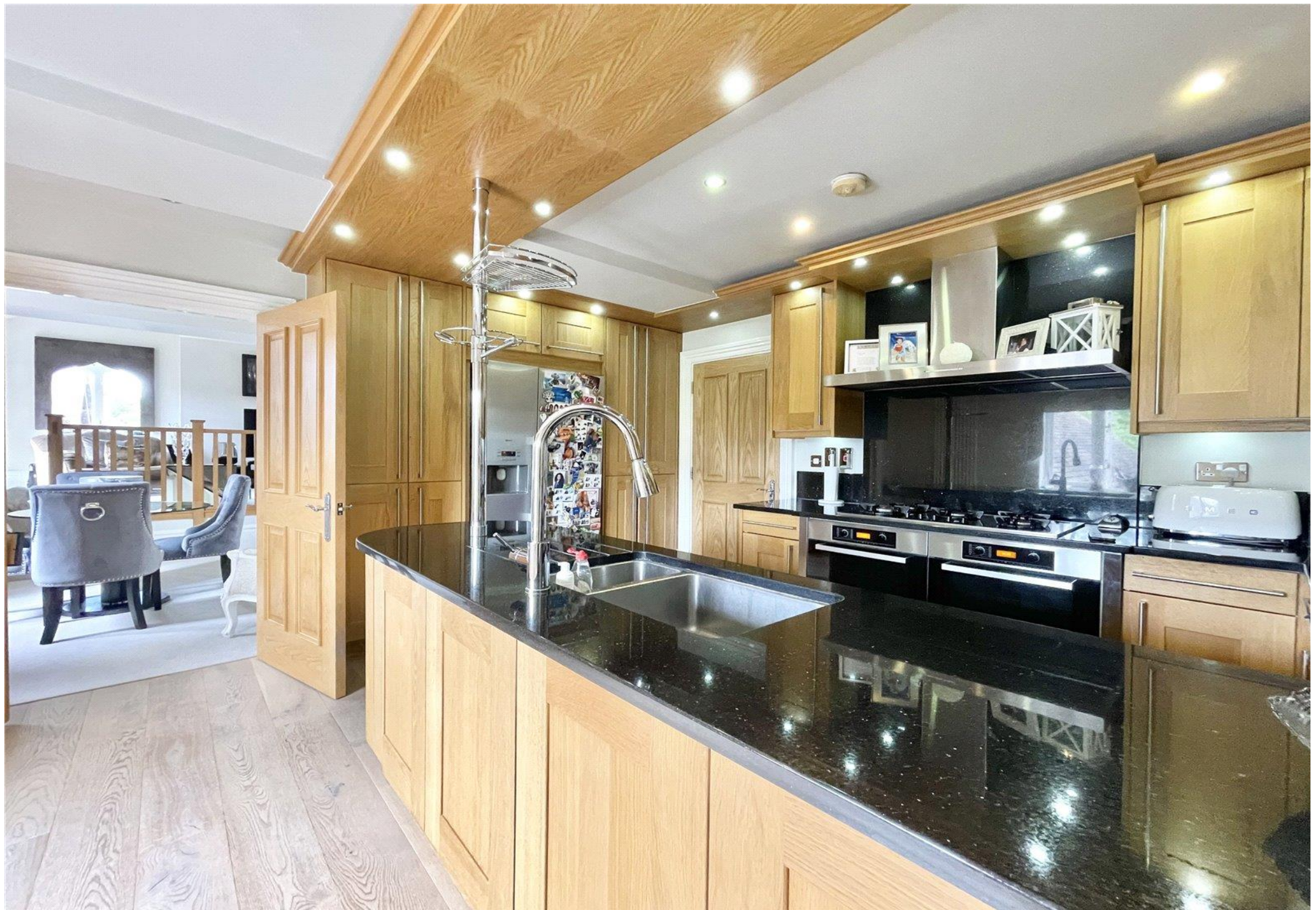
















DISCLAIMER: In accordance with the 1993 Misrepresentation Act the agent had not tested any apparatus, equipment, fixtures, fittings or services and so, cannot verify they are in working order, or fit for their purpose. Neither has the agent checked the legal documentation to verify the leasehold/freehold status of the property. The buyer is advised to obtain verification from their solicitor or surveyor. Also, photographs are for illustration only and may depict items which are not for sale or included in the sale of the property, All size are approximate. All dimensions include wardrobe spaces where applicable.

STATONS

STATONS
PREMIER LETTINGS

1 Hadley Parade
High Street
Barnet
EN5 5SX

020 8441 9796

